



Recombinant Human Proteasome subunit beta type-8 (PSMB8)

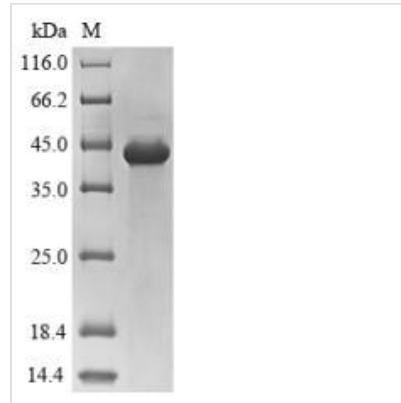
Product Code	CSB-EP018886HU
Relevance	The proteasome is a multicatalytic proteinase complex which is characterized by its ability to cleave peptides with Arg, Phe, Tyr, Leu, and Glu adjacent to the leaving group at neutral or slightly basic pH. The proteasome has an ATP-dependent proteolytic activity. This subunit is involved in antigen processing to generate class I binding peptides. Replacement of PSMB5 by PSMB8 increases the capacity of the immunoproteasome to cleave model peptides after hydrophobic and basic residues. Acts as a major component of interferon gamma-induced sensitivity. Plays a key role in apoptosis via the degradation of the apoptotic inhibitor MCL1. May be involved in the inflammatory response pathway. In cancer cells, substitution of isoform 1 (E2) by isoform 2 (E1) results in immunoproteasome deficiency. Required for the differentiation of preadipocytes into adipocytes.
Abbreviation	Recombinant Human PSMB8 protein
Storage	The shelf life is related to many factors, storage state, buffer ingredients, storage temperature and the stability of the protein itself. Generally, the shelf life of liquid form is 6 months at -20°C/-80°C. The shelf life of lyophilized form is 12 months at -20°C/-80°C.
Uniprot No.	P28062
Product Type	Recombinant Protein
Immunogen Species	Homo sapiens (Human)
Purity	≥ 85% as determined by SDS-PAGE.
Sequence	TTTLAFKFQHGVIAAVDSRASAGSYISALRVNKFIEINPYLLGTMSGCAADCQY WERLLAKECRLYYLRNGERISVSAASKLLSNMMCQYRGMGLSMGSMICGWD KKGPLYVDEHGTRLSGNMFSTGSGNTYAYGVMDSGYRPNLSPEEAYDLG RRAIAYATHRDSYSGGVVNMVHMKEDGWVKVESTVDSDLLHQYREANQ
Research Area	Cell Biology
Source	E.coli
Target Names	PSMB8
Protein Names	Low molecular mass protein 7 Macropain subunit C13 Multicatalytic endopeptidase complex subunit C13 Proteasome component C13 Proteasome subunit beta-5i Really interesting new gene 10 protein
Expression Region	73-276aa
Notes	Repeated freezing and thawing is not recommended. Store working aliquots at 4°C for up to one week.
Tag Info	N-terminal 10xHis-SUMO-tagged and C-terminal Myc-tagged

**Mol. Weight**

42.7 kDa

Protein Length

Full Length of Mature Protein

Image

(Tris-Glycine gel) Discontinuous SDS-PAGE (reduced) with 5% enrichment gel and 15% separation gel.

Reconstitution

We recommend that this vial be briefly centrifuged prior to opening to bring the contents to the bottom. Please reconstitute protein in deionized sterile water to a concentration of 0.1-1.0 mg/mL. We recommend to add 5-50% of glycerol (final concentration) and aliquot for long-term storage at -20°C/-80°C. Our default final concentration of glycerol is 50%. Customers could use it as reference.

Shelf Life

The shelf life is related to many factors, storage state, buffer ingredients, storage temperature and the stability of the protein itself.

Generally, the shelf life of liquid form is 6 months at -20°C/-80°C. The shelf life of lyophilized form is 12 months at -20°C/-80°C.