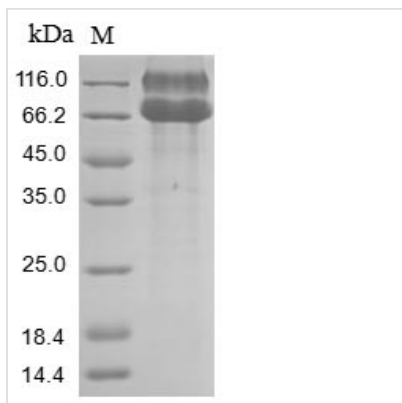




Recombinant Human Ephrin type-A receptor 2 (EPHA2), partial

Product Code	CSB-MP007722HU
Abbreviation	Recombinant Human EPHA2 protein, partial
Storage	The shelf life is related to many factors, storage state, buffer ingredients, storage temperature and the stability of the protein itself. Generally, the shelf life of liquid form is 6 months at -20°C/-80°C. The shelf life of lyophilized form is 12 months at -20°C/-80°C.
Uniprot No.	P29317
Product Type	Recombinant Protein
Immunogen Species	Homo sapiens (Human)
Purity	Greater than 85% as determined by SDS-PAGE.
Sequence	AQGKEVLLDFAAAGGELGWLTHPYGKGWDLMQNIMNDMPIYMYSVCNVMS GDQDNWLRTNWVYRGEAERIFIELKFTVRDCNSFPGGASSCKETFNLYAES DLDYGTNFQKRLFTKIDTIAPDEITVSSDFEARHVKLNVEERSVGPLTRKGFYLA FQDIGACVALLSVRVYYKKCEPELLQGLAHFPETIAGSDAPSLATVAGTCVDHAV VPPGGEEPRMHCAVDGEWLVPPIGQCLCQAGYEKVEDACQACSPGFFKFEAS ESPCLECPHTLPSPEGATSCECEEGFFRAPQDPASMPCTRPPSAPHYLTAV GMGAKVELRWTPPQDSGGREDIVYSVTCEQCWPESGECGPCEASVRYSEPP HGLTRTSVTVSDLEPHMNYTFTVEARNGVSGLVTSRSFRITASVSINQTEPPKV RLEGRSTTSLSVSWSIPPPQQSRVWKYEVTYRKKGDSNSYNVRRTEGFSVTL DDLAPDTTYLVQVQALTQEGQGAGSKVHEFQTLSPGSGN
Research Area	Cardiovascular
Source	Mammalian cell
Target Names	EPHA2
Protein Names	Recommended name: Ephrin type-A receptor 2 EC= 2.7.10.1 Alternative name(s): Epithelial cell kinase Tyrosine-protein kinase receptor ECK
Expression Region	24-534aa
Notes	Repeated freezing and thawing is not recommended. Store working aliquots at 4°C for up to one week.
Tag Info	N-terminal 10xHis-tagged and C-terminal Myc-tagged
Mol. Weight	61.2 kDa
Protein Length	Partial
Image	



(Tris-Glycine gel) Discontinuous SDS-PAGE (reduced) with 5% enrichment gel and 15% separation gel.

Reconstitution

We recommend that this vial be briefly centrifuged prior to opening to bring the contents to the bottom. Please reconstitute protein in deionized sterile water to a concentration of 0.1-1.0 mg/mL. We recommend to add 5-50% of glycerol (final concentration) and aliquot for long-term storage at -20°C/-80°C. Our default final concentration of glycerol is 50%. Customers could use it as reference.

Shelf Life

The shelf life is related to many factors, storage state, buffer ingredients, storage temperature and the stability of the protein itself. Generally, the shelf life of liquid form is 6 months at -20°C/-80°C. The shelf life of lyophilized form is 12 months at -20°C/-80°C.