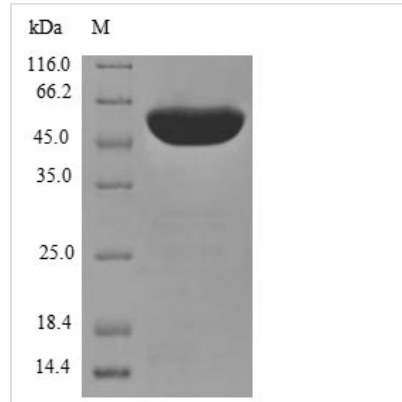




Recombinant Human Protein disulfide-isomerase A3 (PDIA3)

Product Code	CSB-EP017720HU
Relevance	Catalyzes the rearrangement of -S-S- bonds in proteins.
Abbreviation	Recombinant Human PDIA3 protein
Storage	The shelf life is related to many factors, storage state, buffer ingredients, storage temperature and the stability of the protein itself. Generally, the shelf life of liquid form is 6 months at -20°C/-80°C. The shelf life of lyophilized form is 12 months at -20°C/-80°C.
Uniprot No.	P30101
Product Type	Recombinant Protein
Immunogen Species	Homo sapiens (Human)
Purity	Greater than 85% as determined by SDS-PAGE.
Sequence	SDVLELTDDNFESRISDTGSAGLMLVEFFAPWCGHCKRLAPEYEEAAATRLKGI VPLAKVDCTANTNTCNKYGVSGYPTLKIFRDGEEAGAYDGPRTADGIVSHLKK QAGPASVPLRTEEEFKKFISDKDASIVGFFDSSFSEAHSEFLKAASNLRDNYRF AHTNVESLVNEYDDNGEGILFRPSHLTNKFEDKTVAYTEQKMTSGKIKKFIQE NIFGICPHMTEDNKDLIQGKDLLIAYYDVDYEKNAKGSNYWRNRVMMVAKKFL DAGHKLNF AVASRKTFSHELSDFGLESTAGEIPVVAIRTAKEKFMQEEFSR DGKALERFLQDYFDGNLKYRKSEPIPESNDGPKVQVVAENFDEIVNENKDV LIEFYAPWCGHCKNLEPKYKELGEKLSKDPNIVIAKMDATANDVPSPYEVRGFP TIYFSPANKKLNPKKYEGGRELSDFISYLQREATNPPVIQEEKPKKKKKAQEDL
Research Area	Signal Transduction
Source	E.coli
Target Names	PDIA3
Protein Names	58 kDa glucose-regulated protein 58 kDa microsomal protein
Expression Region	25-505aa
Notes	Repeated freezing and thawing is not recommended. Store working aliquots at 4°C for up to one week.
Tag Info	N-terminal 10xHis-tagged and C-terminal Myc-tagged
Mol. Weight	59.3 kDa
Protein Length	Full Length of Mature Protein
Image	



(Tris-Glycine gel) Discontinuous SDS-PAGE (reduced) with 5% enrichment gel and 15% separation gel.

Reconstitution

We recommend that this vial be briefly centrifuged prior to opening to bring the contents to the bottom. Please reconstitute protein in deionized sterile water to a concentration of 0.1-1.0 mg/mL. We recommend to add 5-50% of glycerol (final concentration) and aliquot for long-term storage at $-20^{\circ}\text{C}/-80^{\circ}\text{C}$. Our default final concentration of glycerol is 50%. Customers could use it as reference.

Shelf Life

The shelf life is related to many factors, storage state, buffer ingredients, storage temperature and the stability of the protein itself. Generally, the shelf life of liquid form is 6 months at $-20^{\circ}\text{C}/-80^{\circ}\text{C}$. The shelf life of lyophilized form is 12 months at $-20^{\circ}\text{C}/-80^{\circ}\text{C}$.