

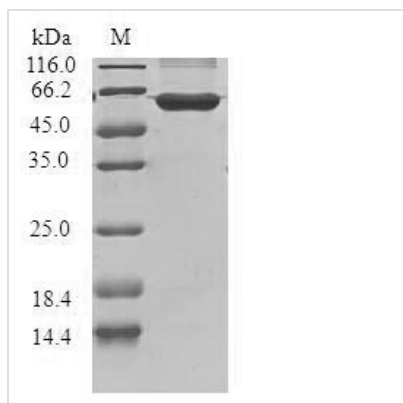


Recombinant Human G1/S-specific cyclin-D3 (CCND3)

Product Code	CSB-EP004814HU
Relevance	Regulatory component of the cyclin D3-CDK4 (DC) complex that phosphorylates and inhibits members of the retinoblastoma (RB) protein family including RB1 and regulates the cell-cycle during G1/S transition. Phosphorylation of RB1 allows dissociation of the transcription factor E2F from the RB/E2F complex and the subsequent transcription of E2F target genes which are responsible for the progression through the G1 phase. Hypophosphorylates RB1 in early G1 phase. Cyclin D-CDK4 complexes are major integrators of various mitogenic and antimitogenic signals. Also substrate for SMAD3, phosphorylating SMAD3 in a cell-cycle-dependent manner and repressing its transcriptional activity. Component of the ternary complex, cyclin D3/CDK4/CDKN1B, required for nuclear translocation and activity of the cyclin D-CDK4 complex.
Abbreviation	Recombinant Human CCND3 protein
Storage	The shelf life is related to many factors, storage state, buffer ingredients, storage temperature and the stability of the protein itself. Generally, the shelf life of liquid form is 6 months at -20°C/-80°C. The shelf life of lyophilized form is 12 months at -20°C/-80°C.
Uniprot No.	P30281
Product Type	Recombinant Protein
Immunogen Species	Homo sapiens (Human)
Purity	≥ 90% as determined by SDS-PAGE.
Sequence	MELLCCEGTRHAPRAGPDPRLGQQRVLQSLRLEERYVPRASYFQCQVQREI KPHMRKMLAYWMLEVCEEQRCEEEVFPLAMNYLDRLSCVPTRKAQLQLLG AVCMLLASKLRETTPLTIEKLCIYTDHAVSPRQLRDWEVLVLGKCLKWDLAAVIA HDFLAFILHRLSLPRDRQALVKKHAQTFLALCATDYTFAMYPPSMIATGSIGAA VQGLGACSMGDELTELLAGITGTEVDCLRACQEQIEAALRESLREASQTSSS PAPKAPRGSSSQGPSQTSTPTDVTAIHL
Research Area	Cell Biology
Source	E.coli
Target Names	CCND3
Protein Names	Recommended name: G1/S-specific cyclin-D3
Expression Region	1-292aa
Notes	Repeated freezing and thawing is not recommended. Store working aliquots at 4°C for up to one week.
Tag Info	N-terminal GST-tagged
Mol. Weight	59.5kDa

**Protein Length**

Full Length

Image

(Tris-Glycine gel) Discontinuous SDS-PAGE (reduced) with 5% enrichment gel and 15% separation gel.

Reconstitution

We recommend that this vial be briefly centrifuged prior to opening to bring the contents to the bottom. Please reconstitute protein in deionized sterile water to a concentration of 0.1-1.0 mg/mL. We recommend to add 5-50% of glycerol (final concentration) and aliquot for long-term storage at -20°C/-80°C. Our default final concentration of glycerol is 50%. Customers could use it as reference.

Shelf Life

The shelf life is related to many factors, storage state, buffer ingredients, storage temperature and the stability of the protein itself. Generally, the shelf life of liquid form is 6 months at -20°C/-80°C. The shelf life of lyophilized form is 12 months at -20°C/-80°C.