



Recombinant Human Chitinase-3-like protein 1 (CHI3L1)

Product Code	CSB-EP005346HU
Relevance	Carbohydrate-binding lectin with a preference for chitin. Has no chitinase activity. May play a role in tissue remodeling and in the capacity of cells to respond to and cope with changes in their environment. Plays a role in T-helper cell type 2 (Th2) inflammatory response and IL-13-induced inflammation, regulating allergen sensitization, inflammatory cell apoptosis, dendritic cell accumulation and M2 macrophage differentiation. Facilitates invasion of pathogenic enteric bacteria into colonic mucosa and lymphoid organs. Mediates activation of AKT1 signaling pathway and subsequent IL8 production in colonic epithelial cells. Regulates antibacterial responses in lung by contributing to macrophage bacterial killing, controlling bacterial dissemination and augmenting host tolerance. Also regulates hyperoxia-induced injury, inflammation and epithelial apoptosis in lung.
Abbreviation	Recombinant Human CHI3L1 protein
Storage	The shelf life is related to many factors, storage state, buffer ingredients, storage temperature and the stability of the protein itself. Generally, the shelf life of liquid form is 6 months at -20°C/-80°C. The shelf life of lyophilized form is 12 months at -20°C/-80°C.
Uniprot No.	P36222
Alias	39 kDa synovial protein Cartilage glycoprotein 39
Product Type	Recombinant Protein
Immunogen Species	Homo sapiens (Human)
Purity	Greater than 90% as determined by SDS-PAGE.
Sequence	YKLVCIYYTSWSQYREGDGSCFPDALDRFLCTHIIYSFANISNDHIDTWEWNDV TLYGMLNLT LKRNPNLKTLLSVGGWNFGSQRFSKIASNTQSRRTFIKSVPPFL RTHGFDGLDLAWLYPGRRDKQHFTTLIKEMKAEFIKEAQPGKKQLLLSAALSA GKVTIDSSYDIAKISQHLD FISIMTYDFHGAWRGTTGHHSPLFRGQEDASPDFR SNTDYAVGYMLRLGAPASKLVMGIPTFGRSFTLASSETGVGAPISGPGIPGRFT KEAGTLAYYEICDFLRGATVHRILGQQVPYATKGNQWVGYYDDQESVKSKVQY LKDRQLAGAMVWALDLDLDDFQGSFCGQDLRFPLTNAIKDALAAT
Research Area	Signal Transduction
Source	E.coli
Target Names	CHI3L1
Protein Names	Recommended name: Chitinase-3-like protein 1 Alternative name(s): 39 kDa synovial protein Cartilage glycoprotein 39 Short name= CGP-39 Short name= GP-39 Short name= hCGP-39 YKL-40
Expression Region	22-383aa



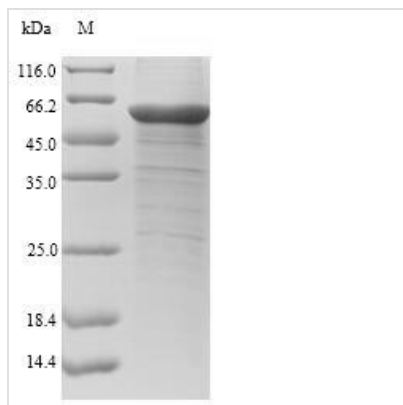
Notes Repeated freezing and thawing is not recommended. Store working aliquots at 4°C for up to one week.

Tag Info N-terminal 10xHis-SUMO-tagged and C-terminal Myc-tagged

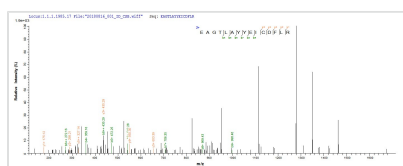
Mol. Weight 60.5kDa

Protein Length Full Length of Mature Protein

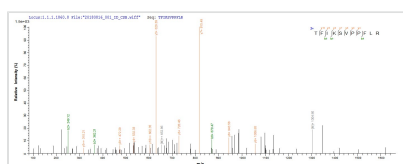
Image



(Tris-Glycine gel) Discontinuous SDS-PAGE (reduced) with 5% enrichment gel and 15% separation gel.



Based on the SEQUEST from database of E.coli host and target protein, the LC-MS/MS Analysis result of CSB-EP005346HU could indicate that this peptide derived from E.coli-expressed Homo sapiens (Human) CHI3L1.



Based on the SEQUEST from database of E.coli host and target protein, the LC-MS/MS Analysis result of CSB-EP005346HU could indicate that this peptide derived from E.coli-expressed Homo sapiens (Human) CHI3L1.

Reconstitution We recommend that this vial be briefly centrifuged prior to opening to bring the contents to the bottom. Please reconstitute protein in deionized sterile water to a concentration of 0.1-1.0 mg/mL. We recommend to add 5-50% of glycerol (final concentration) and aliquot for long-term storage at -20°C/-80°C. Our default final concentration of glycerol is 50%. Customers could use it as reference.

Shelf Life The shelf life is related to many factors, storage state, buffer ingredients, storage temperature and the stability of the protein itself. Generally, the shelf life of liquid form is 6 months at -20°C/-80°C. The shelf life of lyophilized form is 12 months at -20°C/-80°C.