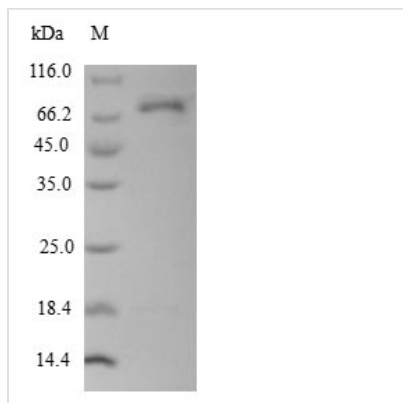




Recombinant Human L-dopachrome tautomerase (DCT), Partial

Product Code	CSB-EP006562HU
Relevance	Catalyzes the conversion of L-dopachrome into 5,6-dihydroxyindole-2-carboxylic acid (DHICA). Involved in regulating eumelanin and phaeomelanin levels.
Abbreviation	Recombinant Human DCT protein, partial
Storage	The shelf life is related to many factors, storage state, buffer ingredients, storage temperature and the stability of the protein itself. Generally, the shelf life of liquid form is 6 months at -20°C/-80°C. The shelf life of lyophilized form is 12 months at -20°C/-80°C.
Uniprot No.	P40126
Product Type	Recombinant Proteins
Immunogen Species	Homo sapiens (Human)
Purity	≥ 90% as determined by SDS-PAGE.
Sequence	QFPRVCMTVDSLVNKECCPRLGAESANVCGSQQGRGQCTEVRADTRPWSG PYILRNQDDRELWPRKFFHRTCKCTGNFAGYNCGDCKFGWTGPNCERKKPP VIRQNIHSLSPQEREQFLGALDLAKRVPDYVITTTQHWLGLLGPNGTQPQFA NCSVYDFVWLHYYSVRDRTLGPGRPYRAIDFSHQGPAFVTWHRYHLLCLER DLQRLIGNESFALPYWNFATGRNECDVCTDQLFGAARPDDPTLISRNSRFSS WETVCDLDDYNHLVTLNCGTYEGLLRNQMGRNSMKLPTLKDIRDCLSLQK FDNPPFFQNSTFSFRNALEGFDKADGTLDSQVMSLHNLVHSFLNGTNALPHS AANDPIFVVLHSFTDAIFDEWMKRFNPPADAWPQELAPIGHNRMYNMVPFFPP VTNEELFLTSDQLGYSYIDL PVSVEETPGWPTT
Research Area	others
Source	E.coli
Target Names	DCT
Expression Region	24-472aa
Notes	Repeated freezing and thawing is not recommended. Store working aliquots at 4°C for up to one week.
Tag Info	N-terminal 10xHis-SUMO-tagged and C-terminal Myc-tagged
Mol. Weight	71.3 kDa
Protein Length	Topological Domain
Image	



(Tris-Glycine gel) Discontinuous SDS-PAGE (reduced) with 5% enrichment gel and 15% separation gel.

Shelf Life

The shelf life is related to many factors, storage state, buffer ingredients, storage temperature and the stability of the protein itself.

Generally, the shelf life of liquid form is 6 months at -20°C/-80°C. The shelf life of lyophilized form is 12 months at -20°C/-80°C.