

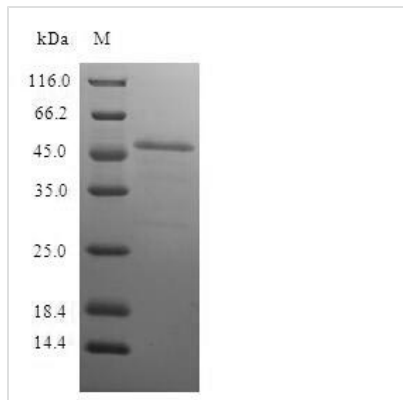


Recombinant Human Proteasome subunit beta type-10 (PSMB10)

Product Code	CSB-EP018877HU
Relevance	The proteasome is a multicatalytic proteinase complex which is characterized by its ability to cleave peptides with Arg, Phe, Tyr, Leu, and Glu adjacent to the leaving group at neutral or slightly basic pH. The proteasome has an ATP-dependent proteolytic activity. This subunit is involved in antigen processing to generate class I binding peptides.
Abbreviation	Recombinant Human PSMB10 protein
Storage	The shelf life is related to many factors, storage state, buffer ingredients, storage temperature and the stability of the protein itself. Generally, the shelf life of liquid form is 6 months at -20°C/-80°C. The shelf life of lyophilized form is 12 months at -20°C/-80°C.
Uniprot No.	P40306
Alias	Low molecular mass protein 10 Macropain subunit MECl-1 Multicatalytic endopeptidase complex subunit MECl-1 Proteasome MECl-1 Proteasome subunit beta-2i
Product Type	Recombinant Protein
Immunogen Species	Homo sapiens (Human)
Purity	≥ 90% as determined by SDS-PAGE.
Sequence	MLKPALEPRGGFSFENCQRNASLERVLPGLKVPHARKTGTTIAGLVFQDGVIL GADTRATNDSVVADKSCSEKIHFIAPKIYCCGAGVAADAEMTTRMVASKMELHA LSTGREPRVATVTRILRQTLFRYQGHV GASLIVGGVDLTGPQLYGVHPHGSYS RLPFTALGSGQDAALAVLEDRFQPNMTLEAAQGLLVEAVTAGILGDLGSGGNV DACVITKTGAKLLRTLSSPTEPVKRSGRYHFVPGTTAVLTQTVKPLTLELVEET VQAMEVE
Research Area	Immunology
Source	E.coli
Target Names	PSMB10
Protein Names	Recommended name: Proteasome subunit beta type-10 EC= 3.4.25.1 Alternative name(s): Low molecular mass protein 10 Macropain subunit MECl-1 Multicatalytic endopeptidase complex subunit MECl-1 Proteasome MECl-1 Proteasome subunit beta
Expression Region	1-273aa
Notes	Repeated freezing and thawing is not recommended. Store working aliquots at 4°C for up to one week.
Tag Info	N-terminal GST-tagged
Mol. Weight	51.6kDa

**Protein Length**

Full Length

Image

(Tris-Glycine gel) Discontinuous SDS-PAGE (reduced) with 5% enrichment gel and 15% separation gel.

Reconstitution

We recommend that this vial be briefly centrifuged prior to opening to bring the contents to the bottom. Please reconstitute protein in deionized sterile water to a concentration of 0.1-1.0 mg/mL. We recommend to add 5-50% of glycerol (final concentration) and aliquot for long-term storage at -20°C/-80°C. Our default final concentration of glycerol is 50%. Customers could use it as reference.

Shelf Life

The shelf life is related to many factors, storage state, buffer ingredients, storage temperature and the stability of the protein itself. Generally, the shelf life of liquid form is 6 months at -20°C/-80°C. The shelf life of lyophilized form is 12 months at -20°C/-80°C.