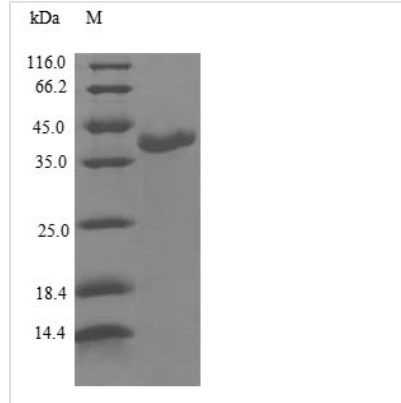


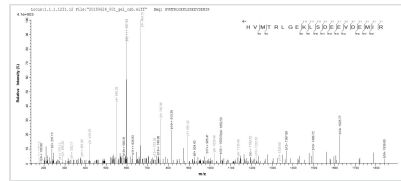


# Recombinant Human Calmodulin-like protein 3 (CALML3)

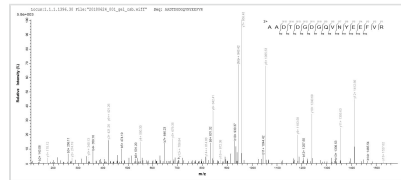
<b>Product Code</b>	CSB-EP004453HU
<b>Relevance</b>	May function as a specific light chain of unconventional myosin-10 (MYO10), also enhances MYO10 translation, possibly by acting as a chaperone for the emerging MYO10 heavy chain protein. May compete with calmodulin by binding, with different affinities, to cellular substrates.
<b>Abbreviation</b>	Recombinant Human CALML3 protein
<b>Storage</b>	The shelf life is related to many factors, storage state, buffer ingredients, storage temperature and the stability of the protein itself. Generally, the shelf life of liquid form is 6 months at -20°C/-80°C. The shelf life of lyophilized form is 12 months at -20°C/-80°C.
<b>Uniprot No.</b>	P27482
<b>Alias</b>	CaM-like protein
<b>Product Type</b>	Recombinant Protein
<b>Immunogen Species</b>	Homo sapiens (Human)
<b>Purity</b>	Greater than 90% as determined by SDS-PAGE.
<b>Sequence</b>	MADQLTEEQVTEFKEAFSLFDKDGDCITTRELGTVMRSLGQNPTEAELRDM MSEIDRDGNGTVDFPEFLGMMARKMKDTDNEEEIREAFRVFDKDGNGFVSA ELRHVMTRLGKLSDEEVDEMIRAADTDGDGQVNYEEFVRVLVSK
<b>Research Area</b>	Tags & Cell Markers
<b>Source</b>	E.coli
<b>Target Names</b>	CALML3
<b>Protein Names</b>	Recommended name: Calmodulin-like protein 3 Alternative name(s): CaM-like protein Short name= CLP Calmodulin-related protein NB-1
<b>Expression Region</b>	1-149aa
<b>Notes</b>	Repeated freezing and thawing is not recommended. Store working aliquots at 4°C for up to one week.
<b>Tag Info</b>	N-terminal GST-tagged
<b>Mol. Weight</b>	43.9kDa
<b>Protein Length</b>	Full Length
<b>Image</b>	



(Tris-Glycine gel) Discontinuous SDS-PAGE (reduced) with 5% enrichment gel and 15% separation gel.



Based on the SEQUEST from database of E.coli host and target protein, the LC-MS/MS Analysis result of CSB-EP004453HU could indicate that this peptide derived from E.coli-expressed Homo sapiens (Human) CALML3.



Based on the SEQUEST from database of E.coli host and target protein, the LC-MS/MS Analysis result of CSB-EP004453HU could indicate that this peptide derived from E.coli-expressed Homo sapiens (Human) CALML3.

**Reconstitution**

We recommend that this vial be briefly centrifuged prior to opening to bring the contents to the bottom. Please reconstitute protein in deionized sterile water to a concentration of 0.1-1.0 mg/mL. We recommend to add 5-50% of glycerol (final concentration) and aliquot for long-term storage at -20°C/-80°C. Our default final concentration of glycerol is 50%. Customers could use it as reference.

**Shelf Life**

The shelf life is related to many factors, storage state, buffer ingredients, storage temperature and the stability of the protein itself. Generally, the shelf life of liquid form is 6 months at -20°C/-80°C. The shelf life of lyophilized form is 12 months at -20°C/-80°C.