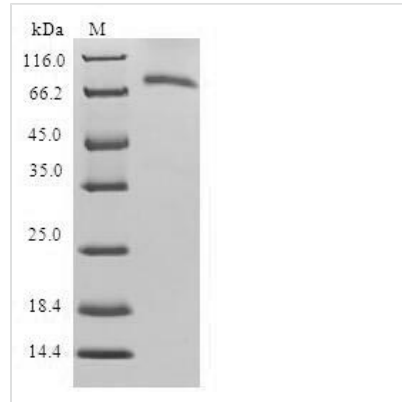




Recombinant Human Selenide, water dikinase 1 (SEPHS1)

Product Code	CSB-EP021015HU
Relevance	Synthesizes selenophosphate from selenide and ATP.
Abbreviation	Recombinant Human SEPHS1 protein
Storage	The shelf life is related to many factors, storage state, buffer ingredients, storage temperature and the stability of the protein itself. Generally, the shelf life of liquid form is 6 months at -20°C/-80°C. The shelf life of lyophilized form is 12 months at -20°C/-80°C.
Uniprot No.	P49903
Alias	Selenium donor protein 1 Selenophosphate synthase 1
Product Type	Recombinant Protein
Immunogen Species	Homo sapiens (Human)
Purity	Greater than 90% as determined by SDS-PAGE.
Sequence	STRESFNPESEYELDKSFRLTRFTELKGTGCKVPQDVLQKLLESLQENHFQEDE QFLGAVMPRLGIGMDTCVIPLRHGGLSLVQTTDYIYPIVDDPYMMGRIACANVL SDLYAMGVTECDNMLMLLGVSNKMTDRERDKVMPLIIQGFKDAEEAGTSVT GGQTVLNPWIVLGGVATTVCQPNEFIMPDNAVPGDVLVLTPLGTQVAVAVH QWLDIPEKWNKIKLVVTQEDVELAYQEAMMNMARLNRTAAGLMHTFNAHAAT DITGFGILGHAQNLAKQQRNEVSFVIHNLPLAKMAAVSKACGNMFGLMHGTC PETSGLLICLPREQAARFCAEIKSPKYGEGHQAWIIGIVEKGNRTARIIDKPRII EVAPQVATQNVNPTPGATS
Research Area	Cell Biology
Source	E.coli
Target Names	SEPHS1
Protein Names	Recommended name: Selenide, water dikinase 1 EC= 2.7.9.3 Alternative name(s): Selenium donor protein 1 Selenophosphate synthase 1
Expression Region	1-392
Notes	Repeated freezing and thawing is not recommended. Store working aliquots at 4°C for up to one week.
Tag Info	N-terminal GST-tagged
Mol. Weight	69.8kDa
Protein Length	Full Length
Image	



(Tris-Glycine gel) Discontinuous SDS-PAGE (reduced) with 5% enrichment gel and 15% separation gel.

Reconstitution

We recommend that this vial be briefly centrifuged prior to opening to bring the contents to the bottom. Please reconstitute protein in deionized sterile water to a concentration of 0.1-1.0 mg/mL. We recommend to add 5-50% of glycerol (final concentration) and aliquot for long-term storage at -20°C/-80°C. Our default final concentration of glycerol is 50%. Customers could use it as reference.

Shelf Life

The shelf life is related to many factors, storage state, buffer ingredients, storage temperature and the stability of the protein itself. Generally, the shelf life of liquid form is 6 months at -20°C/-80°C. The shelf life of lyophilized form is 12 months at -20°C/-80°C.