

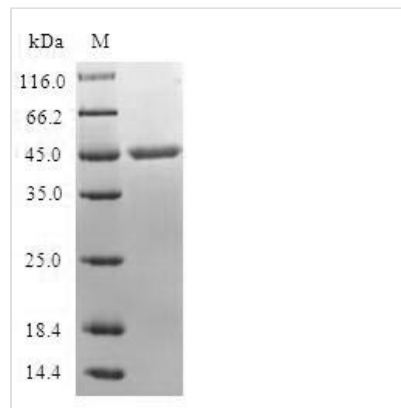


# Recombinant Human MARCKS-related protein (MARCKSL1)

<b>Product Code</b>	CSB-EP013494HU
<b>Relevance</b>	Controls cell movement by regulating actin cytoskeleton homeostasis and filopodium and lamellipodium formation. When unphosphorylated, induces cell migration. When phosphorylated by MAPK8, induces actin bundles formation and stabilization, thereby reducing actin plasticity, hence restricting cell movement, including neuronal migration. May also affect cancer cell migration. May be involved in coupling the protein kinase C and calmodulin signal transduction systems
<b>Abbreviation</b>	Recombinant Human MARCKSL1 protein
<b>Storage</b>	The shelf life is related to many factors, storage state, buffer ingredients, storage temperature and the stability of the protein itself. Generally, the shelf life of liquid form is 6 months at -20°C/-80°C. The shelf life of lyophilized form is 12 months at -20°C/-80°C.
<b>Uniprot No.</b>	P49006
<b>Alias</b>	MARCKS-like protein 1 Macrophage myristoylated alanine-rich C kinase substrate
<b>Product Type</b>	Recombinant Protein
<b>Immunogen Species</b>	Homo sapiens (Human)
<b>Purity</b>	Greater than 90% as determined by SDS-PAGE.
<b>Sequence</b>	MGSQSSKAPRGDVTAEAAAGASPAKANGQENGHVKSNGDLSPKGEGESPPV NGTDEAAGATGDAIEPAPTSQGAEAKGEVPPKETPKKKKFSFKKPFKLSGLS FKRNRKEGGDSSASSPTEEEQEQGEIGACSDEGTAQEGKAAATPESQEPQ AKGAEASAASEEEEAGPQATEPSTPSGPESGPTPASAEQNE
<b>Research Area</b>	Signal Transduction
<b>Source</b>	E.coli
<b>Target Names</b>	MARCKSL1
<b>Protein Names</b>	Recommended name: MARCKS-related protein Alternative name(s): MARCKS-like protein 1 Macrophage myristoylated alanine-rich C kinase substrate Short name= Mac-MARCKS Short name= MacMARCKS
<b>Expression Region</b>	1-195aa
<b>Notes</b>	Repeated freezing and thawing is not recommended. Store working aliquots at 4°C for up to one week.
<b>Tag Info</b>	N-terminal GST-tagged
<b>Mol. Weight</b>	46.5kDa
<b>Protein Length</b>	Full Length of BC066915



## Image



(Tris-Glycine gel) Discontinuous SDS-PAGE (reduced) with 5% enrichment gel and 15% separation gel.

## Reconstitution

We recommend that this vial be briefly centrifuged prior to opening to bring the contents to the bottom. Please reconstitute protein in deionized sterile water to a concentration of 0.1-1.0 mg/mL. We recommend to add 5-50% of glycerol (final concentration) and aliquot for long-term storage at -20°C/-80°C. Our default final concentration of glycerol is 50%. Customers could use it as reference.

## Shelf Life

The shelf life is related to many factors, storage state, buffer ingredients, storage temperature and the stability of the protein itself.

Generally, the shelf life of liquid form is 6 months at -20°C/-80°C. The shelf life of lyophilized form is 12 months at -20°C/-80°C.