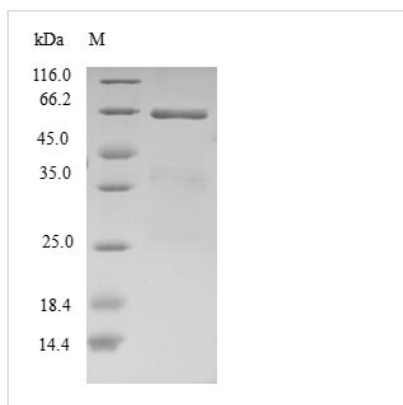




Recombinant Human Translation initiation factor eIF-2B subunit beta (EIF2B2)

| | |
|--------------------------|--|
| Product Code | CSB-EP007515HU |
| Relevance | Catalyzes the exchange of eukaryotic initiation factor 2-bound GDP for GTP. |
| Abbreviation | Recombinant Human EIF2B2 protein |
| Storage | The shelf life is related to many factors, storage state, buffer ingredients, storage temperature and the stability of the protein itself. Generally, the shelf life of liquid form is 6 months at -20°C/-80°C. The shelf life of lyophilized form is 12 months at -20°C/-80°C. |
| Uniprot No. | P49770 |
| Alias | S20I15 S20III15 eIF-2B GDP-GTP exchange factor subunit beta |
| Product Type | Recombinant Protein |
| Immunogen Species | Homo sapiens (Human) |
| Purity | ≥ 90% as determined by SDS-PAGE. |
| Sequence | MPGSAAKGSELSEKSFVETLKRGGGPRSSSEEMARETLGLLRQITDHRWSN AGELMELIRREGRRMTAAQPSETTVGNMVRRLVKIREEYGRLLHGRSDESDQ QESLHKLLTSGGLNEDFSFHYAQLQSNIIIEAINELLVELEGTMENIAAQALEHIIH SNEVIMTIGFSRTVEAFLKEAARKRKFHVIVAECAPFCQGHMAVNLSKAGIET TVMTDAAIFAVMSRVNKKVIIGTKTILANGALRAVTGTHLALAAKHHSTPLIVCAP MFKLSPQFPNEEDSFHKFVAPEEVLPTFTGDIKLVSVHCPVFDYVPELITLFI SNIGGNAPSIIYRLMSELYHPDDHVL |
| Research Area | others |
| Source | E.coli |
| Target Names | EIF2B2 |
| Protein Names | Recommended name: Translation initiation factor eIF-2B subunit beta Alternative name(s): S20I15 S20III15 eIF-2B GDP-GTP exchange factor subunit beta |
| Expression Region | 1-351aa |
| Notes | Repeated freezing and thawing is not recommended. Store working aliquots at 4°C for up to one week. |
| Tag Info | N-terminal GST-tagged |
| Mol. Weight | 66.0kDa |
| Protein Length | Full Length |
| Image | |



(Tris-Glycine gel) Discontinuous SDS-PAGE (reduced) with 5% enrichment gel and 15% separation gel.

Reconstitution

We recommend that this vial be briefly centrifuged prior to opening to bring the contents to the bottom. Please reconstitute protein in deionized sterile water to a concentration of 0.1-1.0 mg/mL. We recommend to add 5-50% of glycerol (final concentration) and aliquot for long-term storage at -20°C/-80°C. Our default final concentration of glycerol is 50%. Customers could use it as reference.

Shelf Life

The shelf life is related to many factors, storage state, buffer ingredients, storage temperature and the stability of the protein itself. Generally, the shelf life of liquid form is 6 months at -20°C/-80°C. The shelf life of lyophilized form is 12 months at -20°C/-80°C.