



Recombinant Human E3 SUMO-protein ligase RanBP2 (RANBP2), partial

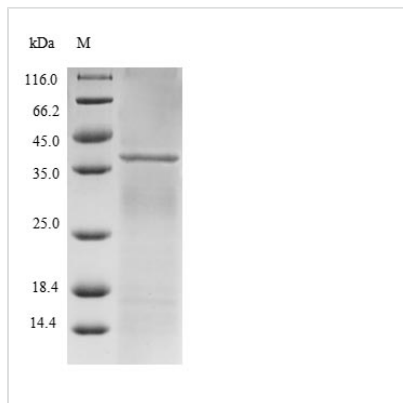
Product Code	CSB-EP019311HU
Relevance	E3 SUMO-protein ligase which facilitates SUMO1 and SUMO2 conjugation by UBE2I. Involved in transport factor (Ran-GTP, karyopherin)-mediated protein import via the F-G repeat-containing domain which acts as a docking site for substrates. Binds single-stranded RNA (in vitro). May bind DNA. Component of the nuclear export pathway. Specific docking site for the nuclear export factor exportin-1. Sumoylates PML at 'Lys-490' which is essential for the proper assembly of PML-NB. Recruits BICD2 to the nuclear envelope and cytoplasmic stacks of nuclear pore complex known as annulate lamellae during G2 phase of cell cycle
Abbreviation	Recombinant Human RANBP2 protein, partial
Storage	The shelf life is related to many factors, storage state, buffer ingredients, storage temperature and the stability of the protein itself. Generally, the shelf life of liquid form is 6 months at -20°C/-80°C. The shelf life of lyophilized form is 12 months at -20°C/-80°C.
Uniprot No.	P49792
Alias	358 kDa nucleoporin Nuclear pore complex protein Nup358 Nucleoporin Nup358 Ran-binding protein 2
Product Type	Recombinant Protein
Immunogen Species	Homo sapiens (Human)
Purity	≥ 90% as determined by SDS-PAGE.
Sequence	PTEESSINYTFKTPEKAKEKKKPEDSPSDDDLIVYELTPTAEQKALATKCLKLPP TFFCYKNRPDYVSEEEEDDEFETAVKKLNGKLYLDGSEKCRPLEENTADNEK ECIIVWEKKPTVEEKAKADTLKLPPTFFCGVCSDTDEDNGNGEDFQSELQKVQ EAQKSQTEEITSTTDSVYTGGEVMVPSFCKSEEPDSITKS
Research Area	others
Source	E.coli
Target Names	RANBP2
Protein Names	Recommended name: E3 SUMO-protein ligase RanBP2 EC= 6.3.2.- Alternative name(s): 358 kDa nucleoporin Nuclear pore complex protein Nup358 Nucleoporin Nup358 Ran-binding protein 2 Short name= RanBP2 p270 Including t
Expression Region	2601-2802aa
Notes	Repeated freezing and thawing is not recommended. Store working aliquots at 4°C for up to one week.
Tag Info	N-terminal 6xHis-B2M-tagged



Mol. Weight 36.8kDa

Protein Length Partial

Image



(Tris-Glycine gel) Discontinuous SDS-PAGE (reduced) with 5% enrichment gel and 15% separation gel.

Reconstitution

We recommend that this vial be briefly centrifuged prior to opening to bring the contents to the bottom. Please reconstitute protein in deionized sterile water to a concentration of 0.1-1.0 mg/mL. We recommend to add 5-50% of glycerol (final concentration) and aliquot for long-term storage at -20°C/-80°C. Our default final concentration of glycerol is 50%. Customers could use it as reference.

Shelf Life

The shelf life is related to many factors, storage state, buffer ingredients, storage temperature and the stability of the protein itself. Generally, the shelf life of liquid form is 6 months at -20°C/-80°C. The shelf life of lyophilized form is 12 months at -20°C/-80°C.