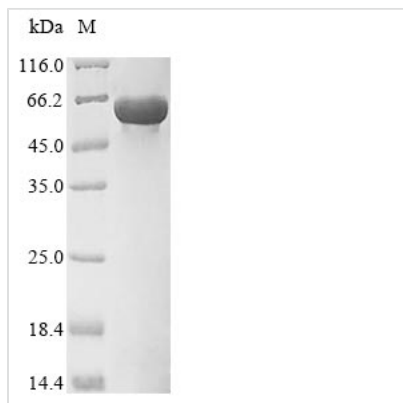


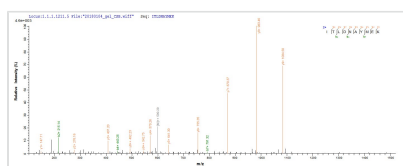


Recombinant Mouse Pyruvate kinase PKM (Pkm)

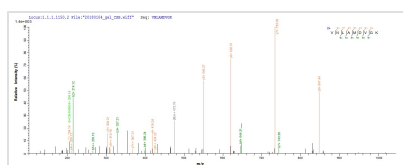
Product Code	CSB-EP018072MO
Relevance	Glycolytic enzyme that catalyzes the transfer of a phosphoryl group from phosphoenolpyruvate (PEP) to ADP, generating ATP. Stimulates POU5F1-mediated transcriptional activation
Abbreviation	Recombinant Mouse Pkm protein
Storage	The shelf life is related to many factors, storage state, buffer ingredients, storage temperature and the stability of the protein itself. Generally, the shelf life of liquid form is 6 months at -20°C/-80°C. The shelf life of lyophilized form is 12 months at -20°C/-80°C.
Uniprot No.	P52480
Product Type	Recombinant Protein
Immunogen Species	Mus musculus (Mouse)
Purity	≥ 85% as determined by SDS-PAGE.
Sequence	MPKPHSEAGTAFIQTQQLHAAMADTFLEHMCRLDIDSAPITARNTGIICTIGPAS RSVEMLKEMIKSGMNVARLNFSHGTHEYHAETIKNVREATESFASDPILYRPVA VALDTKGPEIRTGLIKGSGTAEVELKKGATLKITLDNAYMEKCDENILWLDYKNI CKVVEVGSKIYVDDGLISLQVKEKGADFLVTEVENGGSLGSKKGVNLPGAAVD LPAVSEKDIQDLKFGVEQDVMVFASFIRKAADVHEVRKVLGEKGKNIKIISKIE NHEGVRRFDEILEASDGIMVARGDLGIEIPAQKMMIGRCNRAGKPVIC ATQMLESMIKKPRPTRAEGSDVANAVLDGADCIMLSGETAKGDYPLEAVRMQ HLIAREAEAAIYHLQLFEELRRLAPITSDPTEAAAVGAVEASFKCCSGAIIVLTKS GRSAHQVARYRPRAPIIAVTRNPQTARQAHLYRGIFPVLCCKDAVLNAWAEDVD LRVNLAMDVGKARGFFKKGDVVIVLTGWRPGSGFTNTMRVVPVP
Research Area	Signal Transduction
Source	E.coli
Target Names	Pkm
Protein Names	Pyruvate kinase muscle isozyme Pk3,Pkm2, Pykm
Expression Region	1-531aa
Notes	Repeated freezing and thawing is not recommended. Store working aliquots at 4°C for up to one week.
Tag Info	N-terminal 10xHis-tagged and C-terminal Myc-tagged
Mol. Weight	62.8 kDa
Protein Length	Full Length
Image	



(Tris-Glycine gel) Discontinuous SDS-PAGE (reduced) with 5% enrichment gel and 15% separation gel.



Based on the SEQUEST from database of E.coli host and target protein, the LC-MS/MS Analysis result of CSB-EP018072MO could indicate that this peptide derived from E.coli-expressed Mus musculus (Mouse) Pkm.



Based on the SEQUEST from database of E.coli host and target protein, the LC-MS/MS Analysis result of CSB-EP018072MO could indicate that this peptide derived from E.coli-expressed Mus musculus (Mouse) Pkm.

Reconstitution

We recommend that this vial be briefly centrifuged prior to opening to bring the contents to the bottom. Please reconstitute protein in deionized sterile water to a concentration of 0.1-1.0 mg/mL. We recommend to add 5-50% of glycerol (final concentration) and aliquot for long-term storage at -20°C/-80°C. Our default final concentration of glycerol is 50%. Customers could use it as reference.

Shelf Life

The shelf life is related to many factors, storage state, buffer ingredients, storage temperature and the stability of the protein itself. Generally, the shelf life of liquid form is 6 months at -20°C/-80°C. The shelf life of lyophilized form is 12 months at -20°C/-80°C.