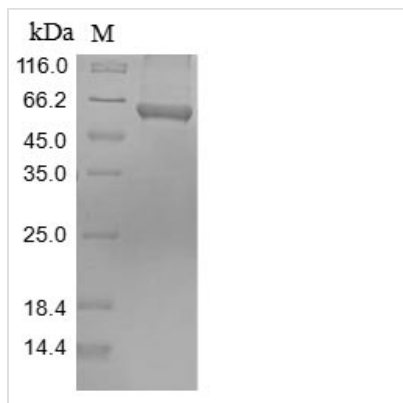




# Recombinant Mouse Pyruvate kinase PKM (Pkm)

<b>Product Code</b>	CSB-MP018072MO
<b>Relevance</b>	Glycolytic enzyme that catalyzes the transfer of a phosphoryl group from phosphoenolpyruvate (PEP) to ADP, generating ATP. Stimulates POU5F1-mediated transcriptional activation
<b>Abbreviation</b>	Recombinant Mouse Pkm protein
<b>Storage</b>	The shelf life is related to many factors, storage state, buffer ingredients, storage temperature and the stability of the protein itself. Generally, the shelf life of liquid form is 6 months at -20°C/-80°C. The shelf life of lyophilized form is 12 months at -20°C/-80°C.
<b>Uniprot No.</b>	P52480
<b>Product Type</b>	Recombinant Protein
<b>Immunogen Species</b>	Mus musculus (Mouse)
<b>Purity</b>	Greater than 90% as determined by SDS-PAGE.
<b>Sequence</b>	MPKPHSEAGTAFIQTQQLHAAMADTFLEHMCRLDIDSAPITARNTGIICTIGPAS RSVEMLKEMIKSGMNVARLNFSHGTHEYHAETIKNVREATESFASDPILYRPVA VALDTKGPEIRTGLIKGSGTAEVELKKGATLKITLDNAYMEKCDENILWLDYKNI CKVVEVGSKIYVDDGLISLQVKEKGADFLVTEVENGGSLGSKKGVNLPGAAVD LPAVSEKDIQDLKFGVEQDMDVDFASFIRKAADVHEVRKVLGEKGKNIKIISKIE NHEGVRRFDEILEASDGIMVARGDLGIEIPA EKVFLAQKMMIGRCNRAGKPVIC ATQMLESMIKKPRPTRAEGSDVANAVLDGADCIMLSGETAKGDYPLEAVRMQ HLIAREAEAAIYHLQLFEELRRLAPITSDPTEAAAVGAVEASFKCCSGAIIVLTKS GRSAHQVARYRPRAPIIAVTRNPQTARQAHLYRGIFPVLCKDAVLNAWAEDVD LRVNLAMDVGKARGFFKKGDVVIVLTGWRPGSGFTNTMRVVPVP
<b>Research Area</b>	Signal Transduction
<b>Source</b>	Mammalian cell
<b>Target Names</b>	Pkm
<b>Protein Names</b>	Pyruvate kinase muscle isozyme Pk3,Pkm2, Pykm
<b>Expression Region</b>	1-531aa of Isoform M2
<b>Notes</b>	Repeated freezing and thawing is not recommended. Store working aliquots at 4°C for up to one week.
<b>Tag Info</b>	N-terminal 10xHis-tagged and C-terminal Myc-tagged
<b>Mol. Weight</b>	61.8 kDa
<b>Protein Length</b>	Full Length
<b>Image</b>	



(Tris-Glycine gel) Discontinuous SDS-PAGE (reduced) with 5% enrichment gel and 15% separation gel.

### Reconstitution

We recommend that this vial be briefly centrifuged prior to opening to bring the contents to the bottom. Please reconstitute protein in deionized sterile water to a concentration of 0.1-1.0 mg/mL. We recommend to add 5-50% of glycerol (final concentration) and aliquot for long-term storage at -20°C/-80°C. Our default final concentration of glycerol is 50%. Customers could use it as reference.

### Shelf Life

The shelf life is related to many factors, storage state, buffer ingredients, storage temperature and the stability of the protein itself. Generally, the shelf life of liquid form is 6 months at -20°C/-80°C. The shelf life of lyophilized form is 12 months at -20°C/-80°C.