



# Recombinant Human GTP-binding nuclear protein Ran (RAN)

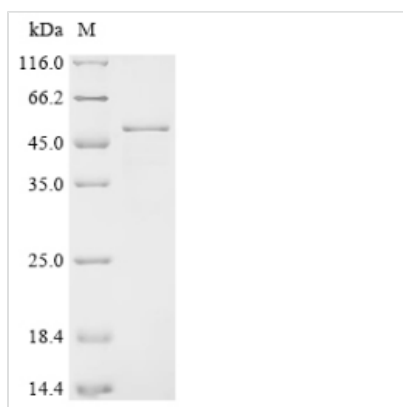
|                          |   |
|--------------------------|---|
| <b>Product Code</b>      | CSB-EP019307HU  |
| <b>Relevance</b>         | GTPase involved in nucleocytoplasmic transport, participating both to the import and the export from the nucleus of proteins and RNAs. Switches between a cytoplasmic GDP- and a nuclear GTP-bound state by nucleotide exchange and GTP hydrolysis. Nuclear import receptors such as importin beta bind their substrates only in the absence of GTP-bound RAN and release them upon direct interaction with GTP-bound RAN while export receptors behave in the opposite way. Thereby, RAN controls cargo loading and release by transport receptors in the proper compartment and ensure the directionality of the transport. |
| <b>Abbreviation</b>      | Recombinant Human RAN protein   |
| <b>Storage</b>           | The shelf life is related to many factors, storage state, buffer ingredients, storage temperature and the stability of the protein itself. Generally, the shelf life of liquid form is 6 months at -20°C/-80°C. The shelf life of lyophilized form is 12 months at -20°C/-80°C.   |
| <b>Uniprot No.</b>       | P62826  |
| <b>Alias</b>             | Androgen receptor-associated protein 24 GTPase Ran Ras-like protein TC4<br>Ras-related nuclear protein  |
| <b>Product Type</b>      | Recombinant Protein   |
| <b>Immunogen Species</b> | Homo sapiens (Human)  |
| <b>Purity</b>            | ≥ 90% as determined by SDS-PAGE.  |
| <b>Sequence</b>          | AAQGEPQVQFKLVLVGDGGTGKTTFFVKRHLTGEFEKKYVATLGVEVHPLVFH<br>TNRGPIKFNVWDTAGQEKFGLRDGYIIQAQCAIIMFDVTSRVTYKNVFNWH<br>RDLVRVCENIPIVLCGNKVDIKDRKVKAKSIVFHRKKNLQYYDISAKSNYNFEKP<br>FLWLARKLIGDPNLEFVAMPALAPPEVVM DPALAAQYEHDLVAQTALPDED<br>DDL  |
| <b>Research Area</b>     | Cell Biology  |
| <b>Source</b>            | E.coli  |
| <b>Target Names</b>      | RAN   |
| <b>Protein Names</b>     | Recommended name: GTP-binding nuclear protein Ran<br>Alternative name(s):<br>Androgen receptor-associated protein 24 GTPase Ran Ras-like protein TC4<br>Ras-related nuclear protein   |
| <b>Expression Region</b> | 1-216aa   |
| <b>Notes</b>             | Repeated freezing and thawing is not recommended. Store working aliquots at 4°C for up to one week.   |
| <b>Tag Info</b>          | N-terminal GST-tagged   |



**Mol. Weight** 51.3kDa

**Protein Length** Full Length

**Image**



(Tris-Glycine gel) Discontinuous SDS-PAGE (reduced) with 5% enrichment gel and 15% separation gel.

**Reconstitution**

We recommend that this vial be briefly centrifuged prior to opening to bring the contents to the bottom. Please reconstitute protein in deionized sterile water to a concentration of 0.1-1.0 mg/mL. We recommend to add 5-50% of glycerol (final concentration) and aliquot for long-term storage at -20°C/-80°C. Our default final concentration of glycerol is 50%. Customers could use it as reference.

**Shelf Life**

The shelf life is related to many factors, storage state, buffer ingredients, storage temperature and the stability of the protein itself. Generally, the shelf life of liquid form is 6 months at -20°C/-80°C. The shelf life of lyophilized form is 12 months at -20°C/-80°C.