



Recombinant Mouse Ras-related protein Rab-10 (Rab10)

Product Code	CSB-EP019152MO
Relevance	The small GTPases Rab are key regulators of intracellular membrane trafficking, from the formation of transport vesicles to their fusion with membranes. Rabs cycle between an inactive GDP-bound form and an active GTP-bound form that is able to recruit to membranes different set of downstream effectors directly responsible for vesicle formation, movement, tethering and fusion (By similarity). That Rab is mainly involved in the biosynthetic transport of proteins from the Golgi to the plasma membrane. Regulates, for instance, SLC2A4/GLUT4 glucose transporter-enriched vesicles delivery to the plasma membrane. In parallel, it regulates the transport of TLR4, a toll-like receptor to the plasma membrane and therefore may be important for innate immune response. Plays also a specific role in asymmetric protein transport to the plasma membrane within the polarized neuron and epithelial cells. In neurons, it is involved in axonogenesis through regulation of vesicular membrane trafficking toward the axonal plasma membrane while in epithelial cells, it regulates transport from the Golgi to the basolateral membrane. Moreover, may play a role in the basolateral recycling pathway and in phagosome maturation. Finally, may play a role in endoplasmic reticulum dynamics and morphology controlling tubulation along microtubules and tubules fusion.
Abbreviation	Recombinant Mouse Rab10 protein
Storage	The shelf life is related to many factors, storage state, buffer ingredients, storage temperature and the stability of the protein itself. Generally, the shelf life of liquid form is 6 months at -20°C/-80°C. The shelf life of lyophilized form is 12 months at -20°C/-80°C.
Uniprot No.	P61027
Product Type	Recombinant Protein
Immunogen Species	Mus musculus (Mouse)
Purity	≥ 90% as determined by SDS-PAGE.
Sequence	MAKPTYDLLFKLLLLIGDSGVGKTCVLFVRFSDDAFNNTTFISTIGIDFKIKTVELQGK KIKLQIWDTAGQERFHTITTSYYRGAMGIMLVYDITNGKSFENISKWLRNIDEHA NEDVERMLLGNKCDMDDKRVVPKGGKGEQIAREHGIRFFETSAKANINIEKAFLT LAEDILRKTPVKEPNSENVDISSGGGVTGWKSKCC
Research Area	Signal Transduction
Source	E.coli
Target Names	Rab10
Protein Names	Recommended name: Ras-related protein Rab-10
Expression Region	1-200aa



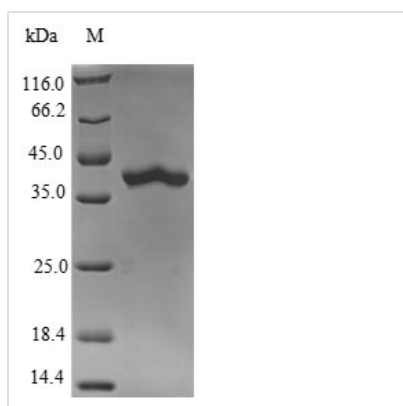
Notes Repeated freezing and thawing is not recommended. Store working aliquots at 4°C for up to one week.

Tag Info N-terminal 6xHis-SUMO-tagged

Mol. Weight 38.5kDa

Protein Length Full Length

Image



(Tris-Glycine gel) Discontinuous SDS-PAGE (reduced) with 5% enrichment gel and 15% separation gel.

Reconstitution We recommend that this vial be briefly centrifuged prior to opening to bring the contents to the bottom. Please reconstitute protein in deionized sterile water to a concentration of 0.1-1.0 mg/mL. We recommend to add 5-50% of glycerol (final concentration) and aliquot for long-term storage at -20°C/-80°C. Our default final concentration of glycerol is 50%. Customers could use it as reference.

Shelf Life The shelf life is related to many factors, storage state, buffer ingredients, storage temperature and the stability of the protein itself. Generally, the shelf life of liquid form is 6 months at -20°C/-80°C. The shelf life of lyophilized form is 12 months at -20°C/-80°C.