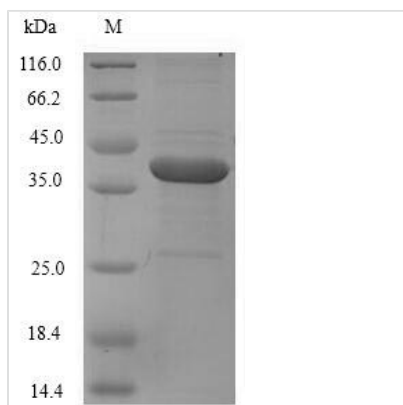




# Recombinant Human Coagulation factor XI (F11), partial

<b>Product Code</b>	CSB-EP007916HU
<b>Relevance</b>	Factor XI triggers the middle phase of the intrinsic pathway of blood coagulation by activating factor IX.
<b>Abbreviation</b>	Recombinant Human F11 protein, partial
<b>Storage</b>	The shelf life is related to many factors, storage state, buffer ingredients, storage temperature and the stability of the protein itself. Generally, the shelf life of liquid form is 6 months at -20°C/-80°C. The shelf life of lyophilized form is 12 months at -20°C/-80°C.
<b>Uniprot No.</b>	P03951
<b>Alias</b>	Plasma thromboplastin antecedent Short name:PTA Cleaved into the following 2 chains: Coagulation factor XIa heavy chain Coagulation factor XIa light chain
<b>Product Type</b>	Recombinant Protein
<b>Immunogen Species</b>	Homo sapiens (Human)
<b>Purity</b>	Greater than 90% as determined by SDS-PAGE.
<b>Sequence</b>	ECVTQLLKDTCFEGGDITTVFTPSAKYCVVCTYHPRCLLFTFTAESPSEDPTR WFTCVLKDSVTETLPRVNRATAISGYSFKQCESHQISACNKDIYVDLDMKGINYN SSVAKSAQECQERCTDDVHCHFFTYATRQFPSLEHRNICLLKHTQTGTPTRIT KLDKVVSGFSLKSCALSNLACIRDIFPNTVFADSNIDSVMAPDAFVCGRICTHH PGCLFFTFSSQEWPKESQRNLCLLKTSEGLPSTRIKSKALSGFSLQSCRHSI PVFCHSSFYHDTDFLGEELDIVAAKSHEACQKLCNAVRCQFFTYTPAQASCN EGKGKCYLKLSSNGSPTKILHGRGGISGYTLRLCKMDNECTTKIKPR
<b>Research Area</b>	Cardiovascular
<b>Source</b>	E.coli
<b>Target Names</b>	F11
<b>Protein Names</b>	Recommended name: Coagulation factor XI Short name= FXI EC= 3.4.21.27 Alternative name(s): Plasma thromboplastin antecedent Short name= PTA Cleaved into the following 2 chains: 1. Coagulation factor XIa heavy chain 2.
<b>Expression Region</b>	19-387aa
<b>Notes</b>	Repeated freezing and thawing is not recommended. Store working aliquots at 4°C for up to one week.
<b>Tag Info</b>	N-terminal 6xHis-tagged
<b>Mol. Weight</b>	45.2kDa
<b>Protein Length</b>	Partial
<b>Image</b>	



(Tris-Glycine gel) Discontinuous SDS-PAGE (reduced) with 5% enrichment gel and 15% separation gel.

### Reconstitution

We recommend that this vial be briefly centrifuged prior to opening to bring the contents to the bottom. Please reconstitute protein in deionized sterile water to a concentration of 0.1-1.0 mg/mL. We recommend to add 5-50% of glycerol (final concentration) and aliquot for long-term storage at -20°C/-80°C. Our default final concentration of glycerol is 50%. Customers could use it as reference.

### Shelf Life

The shelf life is related to many factors, storage state, buffer ingredients, storage temperature and the stability of the protein itself. Generally, the shelf life of liquid form is 6 months at -20°C/-80°C. The shelf life of lyophilized form is 12 months at -20°C/-80°C.