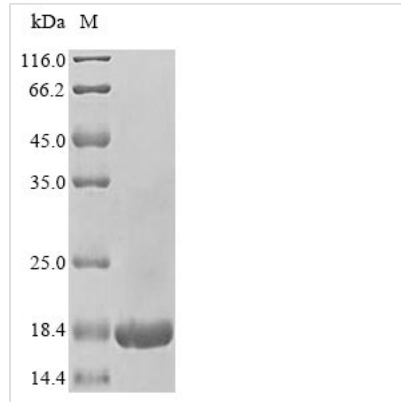


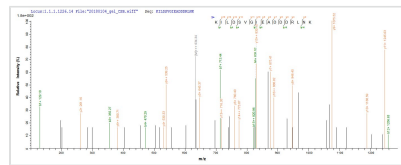


Recombinant Human 60S acidic ribosomal protein P2 (RPLP2)

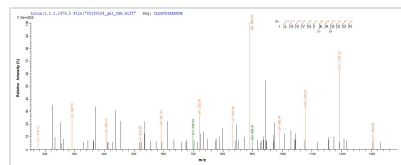
Product Code	CSB-EP020342HU
Relevance	Plays an important role in the elongation step of protein synthesis.
Abbreviation	Recombinant Human RPLP2 protein
Storage	The shelf life is related to many factors, storage state, buffer ingredients, storage temperature and the stability of the protein itself. Generally, the shelf life of liquid form is 6 months at -20°C/-80°C. The shelf life of lyophilized form is 12 months at -20°C/-80°C.
Uniprot No.	P05387
Product Type	Recombinant Protein
Immunogen Species	Homo sapiens (Human)
Purity	≥ 85% as determined by SDS-PAGE.
Sequence	MRYVASYLLAALGGNSSPSAKDIKKILDSVGIEADDDRLNKVISELNGKNIEDVI AQQIGKLASVPAGGAVAVSAAPGSAAPAAGSAPAAAEEKKDEKKEESEESDD DMGFGLFD
Research Area	Cancer
Source	E.coli
Target Names	RPLP2
Protein Names	Large ribosomal subunit protein P2 Renal carcinoma antigen NY-REN-44 D11S2243E, RPP2
Expression Region	1-115aa
Notes	Repeated freezing and thawing is not recommended. Store working aliquots at 4°C for up to one week.
Tag Info	N-terminal 6xHis-tagged
Mol. Weight	15.7 kDa
Protein Length	Full Length
Image	



(Tris-Glycine gel) Discontinuous SDS-PAGE (reduced) with 5% enrichment gel and 15% separation gel.



Based on the SEQUEST from database of E.coli host and target protein, the LC-MS/MS Analysis result of CSB-EP020342HU could indicate that this peptide derived from E.coli-expressed Homo sapiens (Human) RPLP2.



Based on the SEQUEST from database of E.coli host and target protein, the LC-MS/MS Analysis result of CSB-EP020342HU could indicate that this peptide derived from E.coli-expressed Homo sapiens (Human) RPLP2.

Reconstitution

We recommend that this vial be briefly centrifuged prior to opening to bring the contents to the bottom. Please reconstitute protein in deionized sterile water to a concentration of 0.1-1.0 mg/mL. We recommend to add 5-50% of glycerol (final concentration) and aliquot for long-term storage at -20°C/-80°C. Our default final concentration of glycerol is 50%. Customers could use it as reference.

Shelf Life

The shelf life is related to many factors, storage state, buffer ingredients, storage temperature and the stability of the protein itself. Generally, the shelf life of liquid form is 6 months at -20°C/-80°C. The shelf life of lyophilized form is 12 months at -20°C/-80°C.