

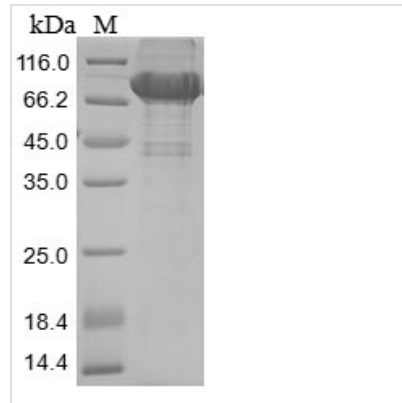


# Recombinant Human Small ribosomal subunit protein uS2 (RPSA)

<b>Product Code</b>	CSB-BP020485HU
<b>Relevance</b>	Required for the assembly and/or stability of the 40S ribosomal subunit. Required for the processing of the 20S rRNA-precursor to mature 18S rRNA in a late step of the maturation of 40S ribosomal subunits. Also functions as a cell surface receptor for laminin. Plays a role in cell adhesion to the basement membrane and in the consequent activation of signaling transduction pathways. May play a role in cell fate determination and tissue morphogenesis. Acts as a PPP1R16B-dependent substrate of PPP1CA.
<b>Abbreviation</b>	Recombinant Human RPSA protein
<b>Storage</b>	The shelf life is related to many factors, storage state, buffer ingredients, storage temperature and the stability of the protein itself. Generally, the shelf life of liquid form is 6 months at -20°C/-80°C. The shelf life of lyophilized form is 12 months at -20°C/-80°C.
<b>Uniprot No.</b>	P08865
<b>Storage Buffer</b>	Tris-based buffer,50% glycerol
<b>Product Type</b>	Recombinant Proteins
<b>Immunogen Species</b>	Homo sapiens (Human)
<b>Purity</b>	≥ 85% as determined by SDS-PAGE.
<b>Sequence</b>	SGALDVLQMKEEDVLKFLAAGTHLGGTNLDFQMEQYIYKRKSDGIYIINLKRTW EKLLLAARAIVAIENPADVSVISSRNTGQRAVLKFAAATGATPIAGRFTPGTFTN QIQAAFREPRLLVVTDPRADHQPLTEASYVNLPTIALCNTDSPLRYVDIAIPCNN KGAHSVGLMWWMLAREVLRMRGTISREHPWEVMPDLYFYRDPEEIEKEEQA AAEKAVTKKEEFQGEWTAPAPEFTATQPEVADWSEGQVQVPSVPIQQFPTEDWS AQPATEDWSAAPTAQATEWVGATTDWS
<b>Research Area</b>	Cardiovascular
<b>Source</b>	Baculovirus
<b>Target Names</b>	RPSA
<b>Protein Names</b>	37 kDa laminin receptor precursorShort name:37LRP37/67 kDa laminin receptorShort name:LRP/LR67 kDa laminin receptorShort name:67LRColon carcinoma laminin-binding proteinLaminin receptor 1Short name:LamRLaminin-binding protein precursor p40Sh
<b>Expression Region</b>	2-295aa
<b>Notes</b>	Repeated freezing and thawing is not recommended. Store working aliquots at 4°C for up to one week.
<b>Tag Info</b>	N-terminal MBP-tagged and C-terminal 6xHis-tagged
<b>Mol. Weight</b>	76.7 kDa

**Protein Length**

Full Length of Mature Protein

**Image**

(Tris-Glycine gel) Discontinuous SDS-PAGE (reduced) with 5% enrichment gel and 15% separation gel.

**Shelf Life**

The shelf life is related to many factors, storage state, buffer ingredients, storage temperature and the stability of the protein itself.

Generally, the shelf life of liquid form is 6 months at -20°C/-80°C. The shelf life of lyophilized form is 12 months at -20°C/-80°C.