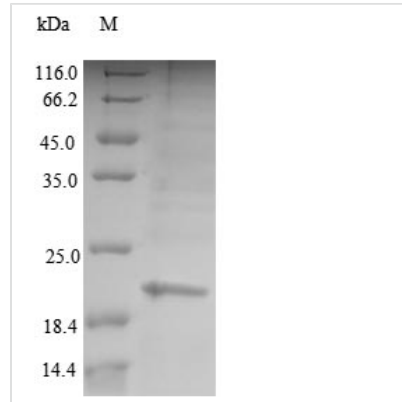




Recombinant Human Glycodelin (PAEP)

Product Code	CSB-EP017381HU
Relevance	This protein is, quantitatively, the main protein synthesized and secreted in the endometrium from mid-luteal phase of the menstrual cycle and during the first semester of pregnancy.
Abbreviation	Recombinant Human PAEP protein
Storage	The shelf life is related to many factors, storage state, buffer ingredients, storage temperature and the stability of the protein itself. Generally, the shelf life of liquid form is 6 months at -20°C/-80°C. The shelf life of lyophilized form is 12 months at -20°C/-80°C.
Uniprot No.	P09466
Alias	Placental protein 14 Short name: PP14 Pregnancy-associated endometrial alpha-2 globulin Short name: PAEG Short name: PEG Progestagen-associated endometrial protein Progesterone-associated endometrial protein
Product Type	Recombinant Protein
Immunogen Species	Homo sapiens (Human)
Purity	≥ 90% as determined by SDS-PAGE.
Sequence	MDIPQTKQDLELPKLAGTWHSMAMATNNISLMATLKAPLRVHITSLLPEDNL EIVLHRWENNNSCVEKKVLGEKTENPKKFKINYTVANEATLLDTDYDNFLFLCLQ DTTTPIQSMQCQYLARVLVEDDEIMQGFIRAFRPLPRHLWYLLDLKQMEEPCR F
Research Area	Tags & Cell Markers
Source	E.coli
Target Names	PAEP
Protein Names	Recommended name: Glycodelin Short name= GDA Alternative name(s): Placental protein 14 Short name= PP14 Pregnancy-associated endometrial alpha-2 globulin Short name= PAEG Short name= PEG Progestagen-associated endometrial
Expression Region	19-180aa
Notes	Repeated freezing and thawing is not recommended. Store working aliquots at 4°C for up to one week.
Tag Info	N-terminal 10xHis-tagged
Mol. Weight	22.4kDa
Protein Length	Full Length of Mature Protein
Image	



(Tris-Glycine gel) Discontinuous SDS-PAGE (reduced) with 5% enrichment gel and 15% separation gel.

Reconstitution

We recommend that this vial be briefly centrifuged prior to opening to bring the contents to the bottom. Please reconstitute protein in deionized sterile water to a concentration of 0.1-1.0 mg/mL. We recommend to add 5-50% of glycerol (final concentration) and aliquot for long-term storage at -20°C/-80°C. Our default final concentration of glycerol is 50%. Customers could use it as reference.

Shelf Life

The shelf life is related to many factors, storage state, buffer ingredients, storage temperature and the stability of the protein itself. Generally, the shelf life of liquid form is 6 months at -20°C/-80°C. The shelf life of lyophilized form is 12 months at -20°C/-80°C.