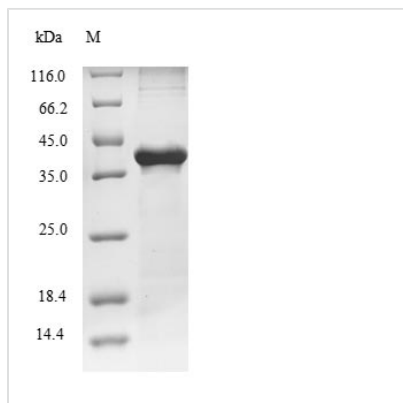




# Recombinant Rat Carboxypeptidase A1 (Cpa1)

<b>Product Code</b>	CSB-EP005875RA
<b>Relevance</b>	Carboxypeptidase that catalyzes the release of a C-terminal amino acid, but has little or no action with -Asp, -Glu, -Arg, -Lys or -Pro.
<b>Abbreviation</b>	Recombinant Rat Cpa1 protein
<b>Storage</b>	The shelf life is related to many factors, storage state, buffer ingredients, storage temperature and the stability of the protein itself. Generally, the shelf life of liquid form is 6 months at -20°C/-80°C. The shelf life of lyophilized form is 12 months at -20°C/-80°C.
<b>Uniprot No.</b>	P00731
<b>Product Type</b>	Recombinant Protein
<b>Immunogen Species</b>	Rattus norvegicus (Rat)
<b>Purity</b>	Greater than 85% as determined by SDS-PAGE.
<b>Sequence</b>	ALSTDSFNATYHTLDEIYEFMDLLVAEHPQLVSKIQIGNTFEGRPIHVLFKSTG GTNRPAIWIDTGIHSREWVTQASGVWFAKKITKDYGQDPTFTAVLDNMDIFLEI VTNPDGFAYTHKTNRMWRKTRSHQTQGLCVGVDPNRNWDAGFGMAGASSN PCSETYRGKFPNSEVEVKSIIVDFVTSHGNKAFISIHSSQLLLYPYGYTSEPAP DQAELDQLAKSAVTALTSLHGTKFKYGSIIDTIYQASGSTIDWTYSQGIKYSFTF ELRDTGLRGFLLPASQIIPTAEETWLALLTIMDHTVKHPY
<b>Research Area</b>	Signal Transduction
<b>Source</b>	E.coli
<b>Target Names</b>	Cpa1
<b>Protein Names</b>	Cpa
<b>Expression Region</b>	111-419aa
<b>Notes</b>	Repeated freezing and thawing is not recommended. Store working aliquots at 4°C for up to one week.
<b>Tag Info</b>	N-terminal 10xHis-tagged and C-terminal Myc-tagged
<b>Mol. Weight</b>	39.6 kDa
<b>Protein Length</b>	Full Length of Mature Protein
<b>Image</b>	



(Tris-Glycine gel) Discontinuous SDS-PAGE (reduced) with 5% enrichment gel and 15% separation gel.

### Reconstitution

We recommend that this vial be briefly centrifuged prior to opening to bring the contents to the bottom. Please reconstitute protein in deionized sterile water to a concentration of 0.1-1.0 mg/mL. We recommend to add 5-50% of glycerol (final concentration) and aliquot for long-term storage at -20°C/-80°C. Our default final concentration of glycerol is 50%. Customers could use it as reference.

### Shelf Life

The shelf life is related to many factors, storage state, buffer ingredients, storage temperature and the stability of the protein itself. Generally, the shelf life of liquid form is 6 months at -20°C/-80°C. The shelf life of lyophilized form is 12 months at -20°C/-80°C.