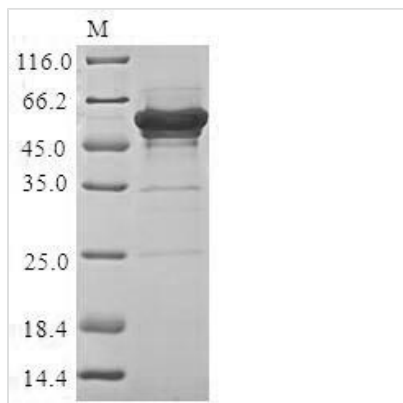




Recombinant Human Lupus La protein (SSB)

Product Code	CSB-BP022705HU
Relevance	Binds to the 3' poly(U) terminus of nascent RNA polymerase III transcripts, protecting them from exonuclease digestion and facilitating their folding and maturation. In case of Coxsackievirus B3 infection, binds to the viral internal ribosome entry site (IRES) and stimulates the IRES-mediated translation
Abbreviation	Recombinant Human SSB protein
Storage	The shelf life is related to many factors, storage state, buffer ingredients, storage temperature and the stability of the protein itself. Generally, the shelf life of liquid form is 6 months at -20°C/-80°C. The shelf life of lyophilized form is 12 months at -20°C/-80°C.
Uniprot No.	P05455
Product Type	Recombinant Protein
Immunogen Species	Homo sapiens (Human)
Purity	Greater than 85% as determined by SDS-PAGE.
Sequence	MAENGDNEKMAALEAKICHQIEYYFGDFNLPRDKFLKEQIKLDEGWVPLEIMIK FNRLNRLTTDFNVIVEALSKSKAELMEISEDKTKIRRSPSKPLPEVTDEYKNDVK NRSVYIKGFPTDATALDDIKEWLEDKGQVLNIQMRRTLHKAFKGSIFVVFDSIESA KKFVETPGQKYKETDLLILFKDDYFAKKNEERKQNKVEAKLRAKQEQAQKQL EEDAEMKSLEEKIGCLLKFSGLDDQTCREDLHILFSNHGEIKWIDFVRGAKEG IILFKEKAKEALGKAKDANNGNLQLRNKEVTWEVLEGEVEKEALKKIIEDQQESL NKWWSKGRRFKGGKGNKAAQPGSGKGVQFQGGKTKFASDDEHDEHDEN GATGPVKRAREETDKEEPASKQKKTENGAGDQ
Research Area	Epigenetics and Nuclear Signaling
Source	Baculovirus
Target Names	SSB
Protein Names	La autoantigen La ribonucleoprotein Sjogren syndrome type B antigen Short name:SS-B
Expression Region	1-408aa
Notes	Repeated freezing and thawing is not recommended. Store working aliquots at 4°C for up to one week.
Tag Info	N-terminal 10xHis-tagged and C-terminal Myc-tagged
Mol. Weight	50.8 kDa
Protein Length	Full Length
Image	



(Tris-Glycine gel) Discontinuous SDS-PAGE (reduced) with 5% enrichment gel and 15% separation gel.

Reconstitution

We recommend that this vial be briefly centrifuged prior to opening to bring the contents to the bottom. Please reconstitute protein in deionized sterile water to a concentration of 0.1-1.0 mg/mL. We recommend to add 5-50% of glycerol (final concentration) and aliquot for long-term storage at $-20^{\circ}\text{C}/-80^{\circ}\text{C}$. Our default final concentration of glycerol is 50%. Customers could use it as reference.

Shelf Life

The shelf life is related to many factors, storage state, buffer ingredients, storage temperature and the stability of the protein itself. Generally, the shelf life of liquid form is 6 months at $-20^{\circ}\text{C}/-80^{\circ}\text{C}$. The shelf life of lyophilized form is 12 months at $-20^{\circ}\text{C}/-80^{\circ}\text{C}$.