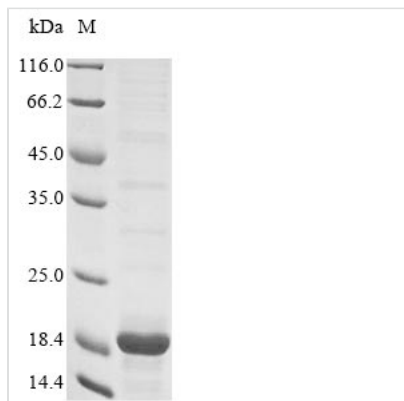




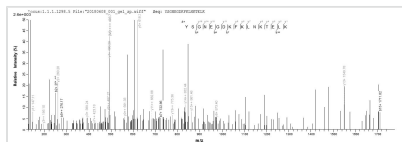
# Recombinant Rat Protein S100-A4 (S100a4)

<b>Product Code</b>	CSB-EP020632RA
<b>Abbreviation</b>	Recombinant Rat S100a4 protein
<b>Storage</b>	The shelf life is related to many factors, storage state, buffer ingredients, storage temperature and the stability of the protein itself. Generally, the shelf life of liquid form is 6 months at -20°C/-80°C. The shelf life of lyophilized form is 12 months at -20°C/-80°C.
<b>Uniprot No.</b>	P05942
<b>Product Type</b>	Recombinant Protein
<b>Immunogen Species</b>	Rattus norvegicus (Rat)
<b>Purity</b>	≥ 85% as determined by SDS-PAGE.
<b>Sequence</b>	ARPLEEALDVIVSTFHKYSGNEGDKFKLNKTELKELLTRELPSFLGRRTDEAAF QKLMNLDNSNRDNEVDFQEYCVFLSCIAMMCNEFFEGCPDKEPRKK
<b>Research Area</b>	Cardiovascular
<b>Source</b>	E.coli
<b>Target Names</b>	S100a4
<b>Protein Names</b>	Recommended name: Protein S100-A4 Alternative name(s): Metastasin Nerve growth factor-induced protein 42A P9K Placental calcium-binding protein S100 calcium-binding protein A4
<b>Expression Region</b>	2-101aa
<b>Notes</b>	Repeated freezing and thawing is not recommended. Store working aliquots at 4°C for up to one week.
<b>Tag Info</b>	N-terminal 10xHis-tagged and C-terminal Myc-tagged
<b>Mol. Weight</b>	18.6 kDa
<b>Protein Length</b>	Full Length of Mature Protein

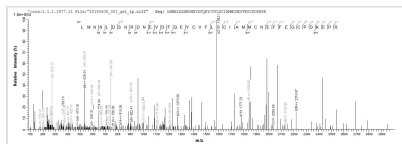
## Image



(Tris-Glycine gel) Discontinuous SDS-PAGE (reduced) with 5% enrichment gel and 15% separation gel.



Based on the SEQUEST from database of E.coli host and target protein, the LC-MS/MS Analysis result of CSB-EP020632RA could indicate that this peptide derived from E.coli-expressed *Rattus norvegicus* (Rat) S100a4.



Based on the SEQUEST from database of E.coli host and target protein, the LC-MS/MS Analysis result of CSB-EP020632RA could indicate that this peptide derived from E.coli-expressed *Rattus norvegicus* (Rat) S100a4.

## Reconstitution

We recommend that this vial be briefly centrifuged prior to opening to bring the contents to the bottom. Please reconstitute protein in deionized sterile water to a concentration of 0.1-1.0 mg/mL. We recommend to add 5-50% of glycerol (final concentration) and aliquot for long-term storage at -20°C/-80°C. Our default final concentration of glycerol is 50%. Customers could use it as reference.

## Shelf Life

The shelf life is related to many factors, storage state, buffer ingredients, storage temperature and the stability of the protein itself. Generally, the shelf life of liquid form is 6 months at -20°C/-80°C. The shelf life of lyophilized form is 12 months at -20°C/-80°C.