



Recombinant Human Alpha-enolase (ENO1)

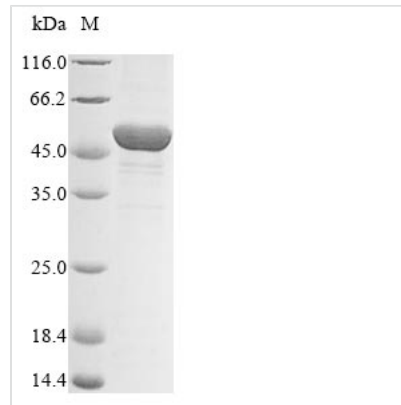
Product Code	CSB-BP007670HU
Relevance	Multifunctional enzyme that, as well as its role in glycolysis, plays a part in various processes such as growth control, hypoxia tolerance and allergic responses. May also function in the intravascular and pericellular fibrinolytic syst due to its ability to serve as a receptor and activator of plasminogen on the cell surface of several cell-types such as leukocytes and neurons. Stimulates immunoglobulin production.MBP1 binds to the myc promoter and acts as a transcriptional repressor. May be a tumor suppressor.
Abbreviation	Recombinant Human ENO1 protein
Storage	The shelf life is related to many factors, storage state, buffer ingredients, storage temperature and the stability of the protein itself. Generally, the shelf life of liquid form is 6 months at -20°C/-80°C. The shelf life of lyophilized form is 12 months at -20°C/-80°C.
Uniprot No.	P06733
Storage Buffer	Tris-based buffer,50% glycerol
Product Type	Recombinant Proteins
Immunogen Species	Homo sapiens (Human)
Purity	≥ 90% as determined by SDS-PAGE. ≥ 95% as determined by SEC-HPLC.
Sequence	SILKIHAREIFDSRGNPTVEVDLFTSKGLFRAAVPSGASTGIYEALELRDNDKTR YMGKGVSKAVEHINKTIAPALVSKKLNVTQEKEIDKLMIEDGTENKSKFGANA ILGVSLAVCKAGAVEKGVPLYRHIADLAGNSEVILPVPAFNVINGGSHAGNKLA MQEFMILPVGAANFREAMRIGAEVYHNLKNNVIKEKYGKDATNVGDEGGFAPNI LENKEGLELLKTAIGKAGYTDKVVIGMDVAASEFFRSGKYDLDFKSPDDPSRYI SPDQLADLYKSFIKDYPVVSIEDPFDQDDWGAWQKFTASAGIQVVGDDLTVTN PKRIAKAVNEKSCNCLLLKVNQIGSVTESLQACKLAQANGWGMVSHRSGET EDTFIADLVVGLCTGQIKTGAPCRSERLAKYNQLLRIEEEELGSKAKFAGRNFN PLAK
Research Area	Metabolism
Source	Baculovirus
Target Names	ENO1
Protein Names	2-phospho-D-glycerate hydro-lyase (C-myc promoter-binding protein) (Enolase 1) (MBP-1) (MPB-1) (Non-neural enolase) (NNE) (Phosphopyruvate hydratase) (Plasminogen-binding protein) (ENO1L1) (MBPB1) (MPB1)
Expression Region	2-434aa
Notes	Repeated freezing and thawing is not recommended. Store working aliquots at 4°C for up to one week.
Tag Info	N-terminal 10xHis-tagged and C-terminal Myc-tagged

**Mol. Weight**

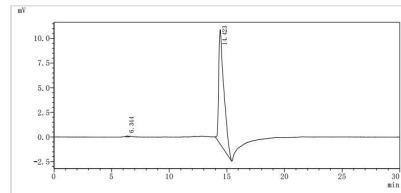
51.0 kDa

Protein Length

Full Length of Mature Protein

Image

(Tris-Glycine gel) Discontinuous SDS-PAGE (reduced) with 5% enrichment gel and 15% separation gel.



The purity of ENO1 was greater than 95% as determined by SEC-HPLC

Shelf Life

The shelf life is related to many factors, storage state, buffer ingredients, storage temperature and the stability of the protein itself. Generally, the shelf life of liquid form is 6 months at -20°C/-80°C. The shelf life of lyophilized form is 12 months at -20°C/-80°C.