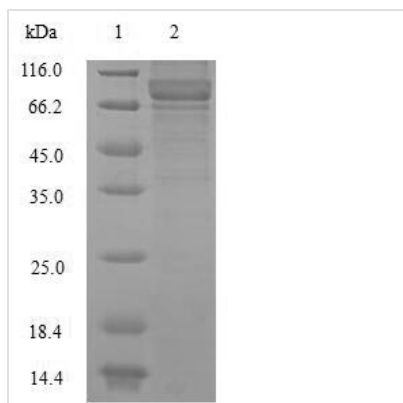


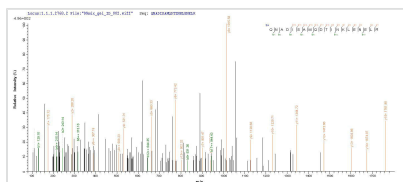


Recombinant Human Neurofilament light polypeptide (NEFL)

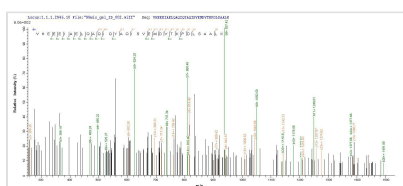
Product Code	CSB-EP015688HU
Relevance	Neurofilaments usually contain three intermediate filament proteins: L, M, and H which are involved in the maintenance of neuronal caliber.
Abbreviation	Recombinant Human NEFL protein
Storage	The shelf life is related to many factors, storage state, buffer ingredients, storage temperature and the stability of the protein itself. Generally, the shelf life of liquid form is 6 months at -20°C/-80°C. The shelf life of lyophilized form is 12 months at -20°C/-80°C.
Uniprot No.	P07196
Alias	68 kDa neurofilament protein Neurofilament triplet L protein
Product Type	Recombinant Protein
Immunogen Species	Homo sapiens (Human)
Purity	≥ 90% as determined by SDS-PAGE.
Sequence	SSFSYEPYYSTSYKRRYVETPRVHISSVRSGYSTARSAYSSYSAPVSSSLSVR RSYSSSSGSLMPLENLDLSQVA AISNDLKSIRTQEKAQLQDLNDRFASFIERV HELEQQNKVLEAELLVLRQKHSEPSRFRALYEQEIRDLRLAAEDATNEKQALQ GEREGLEETLRNLQARYEEEEVLSREDAEGRLMEARKGADEAALARAELEKRID SLMDEISFLKKVHEEEIAELQAQIQYAQISVEMDVTKPDLAALKDIRAQYEKLA AKNMQNAEEWFKSRFTVLTESAAKNTDAVRAAKDEVSESRLLKAKTLEIEAC RGMNEALEKQLQELEDKQNADISAMQDTINKLENELRTTKSEMARYLKEYQDL LNVKMALDIEIAAYRKLLERGEETRLSFTSVGSITSGYSQSSQVFGRSAYGGLQT SSYLMSTRSFPSYYTSHVQEEQIEVEETIEAAKAAEEAKDEPPSEGEAEKEEKD KEEAEEEEAAEEEEAAKEESEEAKEEEEGGEGEGEEETKEAEKEEKKVEGAG EEQAAKKKD
Research Area	others
Source	E.coli
Target Names	NEFL
Protein Names	Recommended name: Neurofilament light polypeptide Short name= NF-L Alternative name(s): 68 kDa neurofilament protein Neurofilament triplet L protein
Expression Region	2-543aa
Notes	Repeated freezing and thawing is not recommended. Store working aliquots at 4°C for up to one week.
Tag Info	N-terminal 10xHis-SUMO-tagged and C-terminal Myc-tagged
Mol. Weight	81.4kDa


Protein Length
Full Length of Mature Protein
Image


(Tris-Glycine gel) Discontinuous SDS-PAGE (reduced) with 5% enrichment gel and 15% separation gel.



Based on the SEQUEST from database of E.coli host and target protein, the LC-MS/MS Analysis result of CSB-EP015688HU could indicate that this peptide derived from E.coli-expressed Homo sapiens (Human) NEFL.



Based on the SEQUEST from database of E.coli host and target protein, the LC-MS/MS Analysis result of CSB-EP015688HU could indicate that this peptide derived from E.coli-expressed Homo sapiens (Human) NEFL.

Reconstitution

We recommend that this vial be briefly centrifuged prior to opening to bring the contents to the bottom. Please reconstitute protein in deionized sterile water to a concentration of 0.1-1.0 mg/mL. We recommend to add 5-50% of glycerol (final concentration) and aliquot for long-term storage at -20°C/-80°C. Our default final concentration of glycerol is 50%. Customers could use it as reference.

Shelf Life

The shelf life is related to many factors, storage state, buffer ingredients, storage temperature and the stability of the protein itself. Generally, the shelf life of liquid form is 6 months at -20°C/-80°C. The shelf life of lyophilized form is 12 months at -20°C/-80°C.