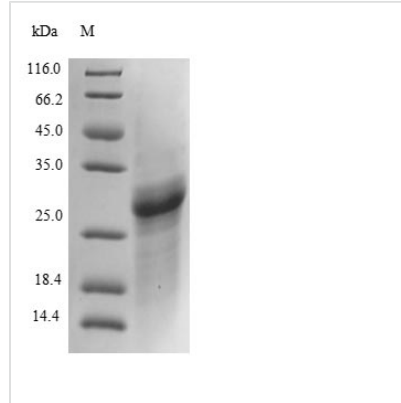


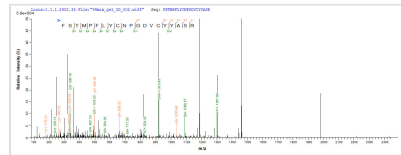


# Recombinant Mouse Collagen alpha-2 (IV) chain (Col4a2), partial

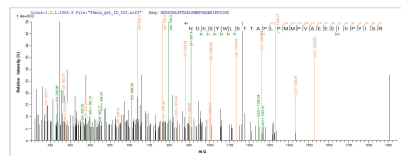
<b>Product Code</b>	CSB-EP005742MO
<b>Relevance</b>	Type IV collagen is the major structural component of glomerular basement membranes (GBM), forming a 'chicken-wire' meshwork together with laminins, proteoglycans and entactin/nidogen. Canstatin, a cleavage product corresponding to the collagen alpha 2(IV) NC1 domain, possesses both anti-angiogenic and anti-tumor cell activity. It inhibits proliferation and migration of endothelial cells, reduces mitochondrial membrane potential, and induces apoptosis. Specifically induces Fas-dependent apoptosis and activates procaspase-8 and -9 activity. Ligand for alphavbeta3 and alphavbeta5 integrins
<b>Abbreviation</b>	Recombinant Mouse Col4a2 protein, partial
<b>Storage</b>	The shelf life is related to many factors, storage state, buffer ingredients, storage temperature and the stability of the protein itself. Generally, the shelf life of liquid form is 6 months at -20°C/-80°C. The shelf life of lyophilized form is 12 months at -20°C/-80°C.
<b>Uniprot No.</b>	P08122
<b>Product Type</b>	Recombinant Protein
<b>Immunogen Species</b>	Mus musculus (Mouse)
<b>Purity</b>	≥ 85% as determined by SDS-PAGE.
<b>Sequence</b>	VSIGYLLVKHSQTDQEPMCPVGMNKLWSGYSLLYFEGQEKAHNQDLGLAGSC LARFSTMPFLYCNP GDVCYASRNDKSYWLSTTAPLPMPVAEEEEIKPYISRC SVCEAPAVAI VHSQDTSIPHCPAGWRSLWIGYSFLMHTAAGDEGGGQSLVS PGSCLEDFRATPFIECN GGRGTCHYFANKYSFWLTTIPEQNFQSTPSADTLKA GLIRTHISRCQVCMKNL
<b>Research Area</b>	others
<b>Source</b>	E.coli
<b>Target Names</b>	Col4a2
<b>Protein Names</b>	Recommended name: Collagen alpha-2(IV) chain Cleaved into the following chain: 1. Canstatin
<b>Expression Region</b>	1481-1707aa
<b>Notes</b>	Repeated freezing and thawing is not recommended. Store working aliquots at 4°C for up to one week.
<b>Tag Info</b>	N-terminal 6xHis-tagged
<b>Mol. Weight</b>	29.1 kDa
<b>Protein Length</b>	Partial
<b>Image</b>	



(Tris-Glycine gel) Discontinuous SDS-PAGE (reduced) with 5% enrichment gel and 15% separation gel.



Based on the SEQUEST from database of E.coli host and target protein, the LC-MS/MS Analysis result of CSB-EP005742MO could indicate that this peptide derived from E.coli-expressed Mus musculus (Mouse) Col4a2.



Based on the SEQUEST from database of E.coli host and target protein, the LC-MS/MS Analysis result of CSB-EP005742MO could indicate that this peptide derived from E.coli-expressed Mus musculus (Mouse) Col4a2.

### Reconstitution

We recommend that this vial be briefly centrifuged prior to opening to bring the contents to the bottom. Please reconstitute protein in deionized sterile water to a concentration of 0.1-1.0 mg/mL. We recommend to add 5-50% of glycerol (final concentration) and aliquot for long-term storage at -20°C/-80°C. Our default final concentration of glycerol is 50%. Customers could use it as reference.

### Shelf Life

The shelf life is related to many factors, storage state, buffer ingredients, storage temperature and the stability of the protein itself. Generally, the shelf life of liquid form is 6 months at -20°C/-80°C. The shelf life of lyophilized form is 12 months at -20°C/-80°C.