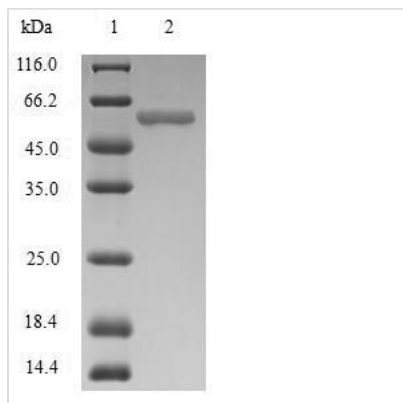




# Recombinant Human Immunoglobulin J chain (JCHAIN)

<b>Product Code</b>	CSB-BP011337HU
<b>Relevance</b>	Serves to link two monomer units of either IgM or IgA. In the case of IgM, the J chain-jointed dimer is a nucleating unit for the IgM pentamer, and in the case of IgA it induces larger polymers. It also help to bind these immunoglobulins to secretory component.
<b>Abbreviation</b>	Recombinant Human JCHAIN protein
<b>Storage</b>	The shelf life is related to many factors, storage state, buffer ingredients, storage temperature and the stability of the protein itself. Generally, the shelf life of liquid form is 6 months at -20°C/-80°C. The shelf life of lyophilized form is 12 months at -20°C/-80°C.
<b>Uniprot No.</b>	P01591
<b>Product Type</b>	Recombinant Protein
<b>Immunogen Species</b>	Homo sapiens (Human)
<b>Purity</b>	≥ 85% as determined by SDS-PAGE.
<b>Sequence</b>	QEDERIVLVDNKCKCARITSRIIRSSDPNEDIVERNIRIIVPLNRENISDPTSPL RTRFVYHLSDLCKKCDPTEVELDNQIVTATQSNICDEDSATETCYTYDRNKCY TAVVPLVYGGGETKMOVETALTPDACYPD
<b>Research Area</b>	Immunology
<b>Source</b>	Baculovirus
<b>Target Names</b>	JCHAIN
<b>Protein Names</b>	Joining chain of multimeric IgA and IgM
<b>Expression Region</b>	23-159aa
<b>Notes</b>	Repeated freezing and thawing is not recommended. Store working aliquots at 4°C for up to one week.
<b>Tag Info</b>	N-terminal MBP-tagged and C-terminal 6xHis-tagged
<b>Mol. Weight</b>	59.6kDa
<b>Protein Length</b>	Full Length of Mature Protein
<b>Image</b>	



(Tris-Glycine gel) Discontinuous SDS-PAGE (reduced) with 5% enrichment gel and 15% separation gel.

### Reconstitution

We recommend that this vial be briefly centrifuged prior to opening to bring the contents to the bottom. Please reconstitute protein in deionized sterile water to a concentration of 0.1-1.0 mg/mL. We recommend to add 5-50% of glycerol (final concentration) and aliquot for long-term storage at -20°C/-80°C. Our default final concentration of glycerol is 50%. Customers could use it as reference.

### Shelf Life

The shelf life is related to many factors, storage state, buffer ingredients, storage temperature and the stability of the protein itself. Generally, the shelf life of liquid form is 6 months at -20°C/-80°C. The shelf life of lyophilized form is 12 months at -20°C/-80°C.