

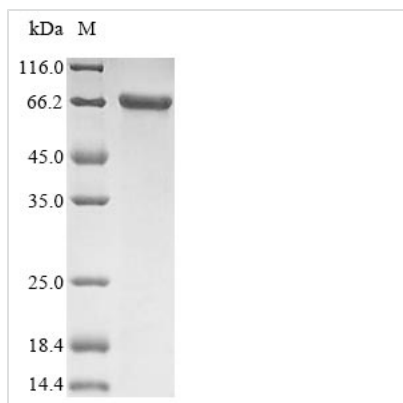


Recombinant Human Keratin, type II cytoskeletal 1 (KRT1)

Product Code	CSB-EP012503HU
Relevance	May regulate the activity of kinases such as PKC and SRC via binding to integrin beta-1 (ITB1) and the receptor of activated protein C kinase 1 (RACK1). In complex with C1QBP is a high affinity receptor for kininogen-1/HMWK.
Abbreviation	Recombinant Human KRT1 protein
Storage	The shelf life is related to many factors, storage state, buffer ingredients, storage temperature and the stability of the protein itself. Generally, the shelf life of liquid form is 6 months at -20°C/-80°C. The shelf life of lyophilized form is 12 months at -20°C/-80°C.
Uniprot No.	P04264
Product Type	Recombinant Protein
Immunogen Species	Homo sapiens (Human)
Purity	Greater than 85% as determined by SDS-PAGE.
Sequence	SRQFSSRSGYRSGGGFSSGSAGIINYQRRTTSSSTRRSGGGGGRFSSCGGG GGSGFGAGGGFSGRSLVNLGGSKSISISVARGGGGRSGFGGGYGGGGFGGG GFGGGGFGGGGIGGGGFGGFGSGGGGFGGGGFGGGGYGGGYGPVCP GIQEV TINQ SLLQPLNVEIDPEIQKVKSREREQIKSLNNQFASFIDKVR FLEQQN QVLQTKWELLQVDTSTRTHNLEPYFESFINNLR RVDQLKSDQSR LDSELKN MQDMVEDYRNKYEDEINKRTNAENEFVTIKKDV DGAYMTKVDL QAKLDNLQQ EIDFLTALYQAELSQMQTQISETNVILSMDNRS LLDLSIAE VKAQYEDIAQKS KAEAESLYQSKYEELQITAGRHGDSVRNSKIEISELNR VIQRLRSEIDNVKKQIS NLQQSISDAEQRGENALKDAKNKLN DLEDALQQA KEDLARLLR DYQELMNTKL ALDLEIATYRTLLEGEESRMSGECAPNV SVSVSTSH TTISGGGSRGGGGGGY GSGGSSYGS GGGSYGSGGGGGG RGSYGS GSSYGS GGGSYGSGGGG GHGSYGS GSSSGYRGGSGGGGG SSGGRGSGGGSSGGSIGGRGSSSGG VKSSGGSSSVK FVSTTYSGVTR
Research Area	Signal Transduction
Source	E.coli
Target Names	KRT1
Protein Names	67 kDa cytokeratin Cytokeratin-1 Short name: CK-1 Hair alpha protein Keratin-1 Short name: K1 Type-II keratin Kb1 KRTA
Expression Region	2-644aa
Notes	Repeated freezing and thawing is not recommended. Store working aliquots at 4°C for up to one week.
Tag Info	N-terminal 6xHis-tagged
Mol. Weight	69.9 kDa

**Protein Length**

Full Length of Mature Protein

Image

(Tris-Glycine gel) Discontinuous SDS-PAGE (reduced) with 5% enrichment gel and 15% separation gel.

Reconstitution

We recommend that this vial be briefly centrifuged prior to opening to bring the contents to the bottom. Please reconstitute protein in deionized sterile water to a concentration of 0.1-1.0 mg/mL. We recommend to add 5-50% of glycerol (final concentration) and aliquot for long-term storage at -20°C/-80°C. Our default final concentration of glycerol is 50%. Customers could use it as reference.

Shelf Life

The shelf life is related to many factors, storage state, buffer ingredients, storage temperature and the stability of the protein itself. Generally, the shelf life of liquid form is 6 months at -20°C/-80°C. The shelf life of lyophilized form is 12 months at -20°C/-80°C.