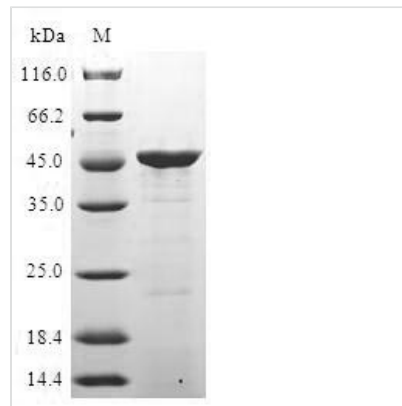




# Recombinant Human Immunity-related GTPase family M protein (IRGM)

<b>Product Code</b>	CSB-EP011827HU
<b>Relevance</b>	Putative GTPase which is required for clearance of acute protozoan and bacterial infections. Functions in innate immune response probably through regulation of autophagy. May regulate proinflammatory cytokine production and prevent endotoxemia upon infection. May also play a role in macrophages adhesion and motility
<b>Abbreviation</b>	Recombinant Human IRGM protein
<b>Storage</b>	The shelf life is related to many factors, storage state, buffer ingredients, storage temperature and the stability of the protein itself. Generally, the shelf life of liquid form is 6 months at -20°C/-80°C. The shelf life of lyophilized form is 12 months at -20°C/-80°C.
<b>Uniprot No.</b>	A1A4Y4
<b>Alias</b>	Immunity-related GTPase family M protein 1 Interferon-inducible protein 1 LPS-stimulated RAW 264.7 macrophage protein 47 homolog
<b>Product Type</b>	Recombinant Protein
<b>Immunogen Species</b>	Homo sapiens (Human)
<b>Purity</b>	Greater than 90% as determined by SDS-PAGE.
<b>Sequence</b>	MEAMNVEKASADGNLPEVISNIKETLKIVSRTPVNITMAGDSGNGMSTFISALR NTGHEGKASPTELVKATQRCASYFSSHFSNVVLWDLPGTGSATTTLENYLM EMQFNRYDFIMVASAQFSMNHVMLAKTAEDMGKKFYIVWTKLDMDLSTGALP EVQLLQIRENVLENLQKERVCEY
<b>Research Area</b>	Immunology
<b>Source</b>	E.coli
<b>Target Names</b>	IRGM
<b>Protein Names</b>	Recommended name: Immunity-related GTPase family M protein EC= 3.6.5.- Alternative name(s): Immunity-related GTPase family M protein 1 Interferon-inducible protein 1 LPS-stimulated RAW 264.7 macrophage protein 47 homolog Short n
<b>Expression Region</b>	1-181aa
<b>Notes</b>	Repeated freezing and thawing is not recommended. Store working aliquots at 4°C for up to one week.
<b>Tag Info</b>	N-terminal GST-tagged
<b>Mol. Weight</b>	47.1kDa
<b>Protein Length</b>	Full Length
<b>Image</b>	



(Tris-Glycine gel) Discontinuous SDS-PAGE (reduced) with 5% enrichment gel and 15% separation gel.

### Reconstitution

We recommend that this vial be briefly centrifuged prior to opening to bring the contents to the bottom. Please reconstitute protein in deionized sterile water to a concentration of 0.1-1.0 mg/mL. We recommend to add 5-50% of glycerol (final concentration) and aliquot for long-term storage at -20°C/-80°C. Our default final concentration of glycerol is 50%. Customers could use it as reference.

### Shelf Life

The shelf life is related to many factors, storage state, buffer ingredients, storage temperature and the stability of the protein itself. Generally, the shelf life of liquid form is 6 months at -20°C/-80°C. The shelf life of lyophilized form is 12 months at -20°C/-80°C.