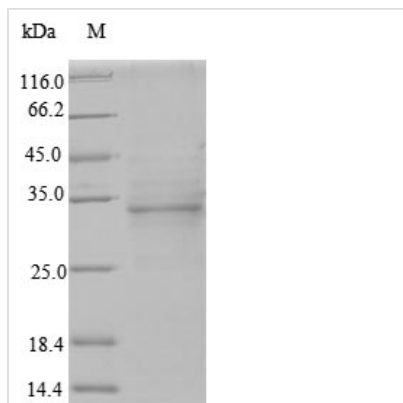




# Recombinant Human Odontogenic ameloblast-associated protein (ODAM)

<b>Product Code</b>	CSB-EP016268HU
<b>Relevance</b>	Tooth-associated epithelia protein that probably plays a role in odontogenesis, the complex process that results in the initiation and generation of the tooth. May be incorporated in the enamel matrix at the end of mineralization process. Involved in the induction of RHOA activity via interaction with ARHGEF and expression of downstream factors such as ROCK. Plays a role in attachment of the junctional epithelium to the tooth surface.
<b>Abbreviation</b>	Recombinant Human ODAM protein
<b>Storage</b>	The shelf life is related to many factors, storage state, buffer ingredients, storage temperature and the stability of the protein itself. Generally, the shelf life of liquid form is 6 months at -20°C/-80°C. The shelf life of lyophilized form is 12 months at -20°C/-80°C.
<b>Uniprot No.</b>	A1E959
<b>Alias</b>	Apin
<b>Product Type</b>	Recombinant Protein
<b>Immunogen Species</b>	Homo sapiens (Human)
<b>Purity</b>	Greater than 90% as determined by SDS-PAGE.
<b>Sequence</b>	<p>           APLIPQRLMSASNSNELLLLNLNNGQLLPLQLQGPLNSWIPPFSGILQQQQQAQI            PGLSQFSLSALDQFAGLLPNQIPLTGEASFAQGAQAGQVDPLQLQTPPQTQP            GPSHVMPYVFSFKMPQEQQQMFQYYPVYMVLPWEQPQQTVPRSPQQTRQQ            QYEEQIPFYAQFGYIPQLAEPAISGGQQQLAFDPQLGTAPEIAVMSTGEEIPYL            QKEAINFRHDSAGVFMPSTSPKPSTTNVFTSAVDQTITPELPEEKDKTDSLREP         </p>
<b>Research Area</b>	Signal Transduction
<b>Source</b>	E.coli
<b>Target Names</b>	ODAM
<b>Protein Names</b>	Recommended name: Odontogenic ameloblast-associated protein Alternative name(s): Apin
<b>Expression Region</b>	16-279aa
<b>Notes</b>	Repeated freezing and thawing is not recommended. Store working aliquots at 4°C for up to one week.
<b>Tag Info</b>	N-terminal 6xHis-tagged
<b>Mol. Weight</b>	33.2kDa
<b>Protein Length</b>	Full Length of Mature Protein
<b>Image</b>	



(Tris-Glycine gel) Discontinuous SDS-PAGE (reduced) with 5% enrichment gel and 15% separation gel.

### Reconstitution

We recommend that this vial be briefly centrifuged prior to opening to bring the contents to the bottom. Please reconstitute protein in deionized sterile water to a concentration of 0.1-1.0 mg/mL. We recommend to add 5-50% of glycerol (final concentration) and aliquot for long-term storage at -20°C/-80°C. Our default final concentration of glycerol is 50%. Customers could use it as reference.

### Shelf Life

The shelf life is related to many factors, storage state, buffer ingredients, storage temperature and the stability of the protein itself. Generally, the shelf life of liquid form is 6 months at -20°C/-80°C. The shelf life of lyophilized form is 12 months at -20°C/-80°C.