



Recombinant Bovine Keratin, type I cytoskeletal 17 (KRT17)

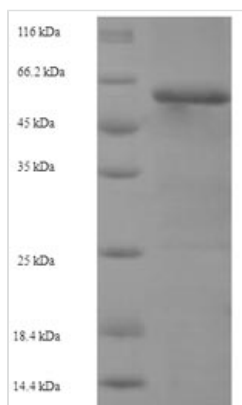
Product Code	CSB-EP012516BO
Relevance	Type I keratin involved in the formation and maintenance of various skin appendages, specifically in determining shape and orientation of hair. Required for the correct growth of hair follicles, in particular for the persistence of the anagen (growth) state. Modulates the function of TNF-alpha in the specific context of hair cycling. Regulates protein synthesis and epithelial cell growth through binding to the adapter protein SFN and by stimulating Akt/mTOR pathway. Involved in tissue repair. May be a marker of basal cell differentiation in complex epithelia and therefore indicative of a certain type of epithelial "st cells". Acts as a promoter of epithelial proliferation by acting a regulator of immune response in skin: promotes Th1/Th17-dominated immune environment contributing to the development of basaloid skin tumors. May act as an autoantigen in the immunopathogenesis of psoriasis, with certain peptide regions being a major target for autoreactive T-cells and hence causing their proliferation.
Abbreviation	Recombinant Bovine KRT17 protein
Storage	The shelf life is related to many factors, storage state, buffer ingredients, storage temperature and the stability of the protein itself. Generally, the shelf life of liquid form is 6 months at -20°C/-80°C. The shelf life of lyophilized form is 12 months at -20°C/-80°C.
Uniprot No.	A1L595
Alias	Cytokeratin-17 ;CK-17Keratin-17 ;K17
Product Type	Recombinant Protein
Immunogen Species	Bos taurus (Bovine)
Purity	Greater than 90% as determined by SDS-PAGE.
Sequence	MTTIRHFSSGSIKSSGLAGGSSRSCRVSGLGGGSCRLGSAGGLGSGGLGSSYSSCYSGGSGGGYVSGGYGGGFGGVDGLLVGGEKATMQLNDR LASYLDKVRAL EE ANTELELKIRDWYQKQAPGPAPDYSSYFKTIEDLRNKIHTA TVDNANLLLQIDNARLAADD FRTKFETE QALRVSVEADINGLRRVLDLTLARA DLEMQIENLKEELAYLRKNHEEEMKALRGQVGGEINVEMDAAPGVDL SRILNE MRDQY EKMAEKNRKAEDWFFSKTEELNRE VATNSELVQSGKSEISELRRTL QALEIELQSQLSMKASLEGSLAETENRYCMQLSQIQGLIGSVEEQLAQLRC EM EQQNQEYKILLDVKTRLEQEIATYRRLL EGEDAHLTQYKTKEPVTTTRQVRTIVE EVQDGRVISSREQVHQTSH
Research Area	Others
Source	E.coli
Target Names	KRT17
Protein Names	Recommended name: Keratin, type I cytoskeletal 17 Alternative name(s):



Cytokeratin-17 Short name= CK-17 Keratin-17 Short name= K17

Expression Region	1-441aa
Notes	Repeated freezing and thawing is not recommended. Store working aliquots at 4°C for up to one week.
Tag Info	N-terminal 6xHis-SUMO-tagged
Mol. Weight	64.7kDa
Protein Length	Full Length

Image



(Tris-Glycine gel) Discontinuous SDS-PAGE (reduced) with 5% enrichment gel and 15% separation gel.

Reconstitution We recommend that this vial be briefly centrifuged prior to opening to bring the contents to the bottom. Please reconstitute protein in deionized sterile water to a concentration of 0.1-1.0 mg/mL. We recommend to add 5-50% of glycerol (final concentration) and aliquot for long-term storage at -20°C/-80°C. Our default final concentration of glycerol is 50%. Customers could use it as reference.

Shelf Life The shelf life is related to many factors, storage state, buffer ingredients, storage temperature and the stability of the protein itself. Generally, the shelf life of liquid form is 6 months at -20°C/-80°C. The shelf life of lyophilized form is 12 months at -20°C/-80°C.