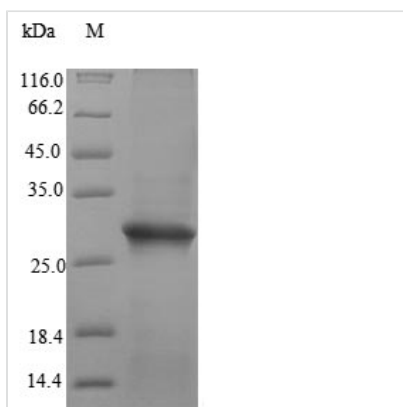


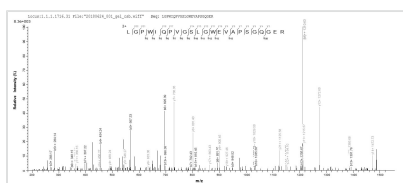


# Recombinant Human Sperm-egg fusion protein Juno (IZUMO1R)

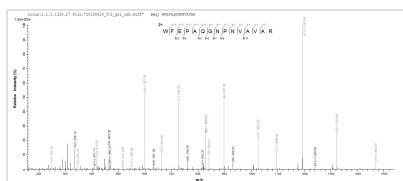
<b>Product Code</b>	CSB-EP008789HU
<b>Relevance</b>	Receptor for IZUMO1 present at the cell surface of oocytes (oolemma), which is essential for gamete recognition and fertilization. The IZUMO1:IZUMO1R/JUNO interaction is a necessary adhesion event between sperm and egg that is required for fertilization but is not sufficient for cell fusion. The ligand-receptor interaction probably does not act as a membrane 'fusogen'. Does not bind folate (By similarity).
<b>Abbreviation</b>	Recombinant Human IZUMO1R protein
<b>Storage</b>	The shelf life is related to many factors, storage state, buffer ingredients, storage temperature and the stability of the protein itself. Generally, the shelf life of liquid form is 6 months at -20°C/-80°C. The shelf life of lyophilized form is 12 months at -20°C/-80°C.
<b>Uniprot No.</b>	A6ND01
<b>Alias</b>	Folate receptor 4 Folate receptor delta Short name: FR-delta IZUMO1 receptor protein JUNO
<b>Product Type</b>	Recombinant Protein
<b>Immunogen Species</b>	Homo sapiens (Human)
<b>Purity</b>	≥ 90% as determined by SDS-PAGE.
<b>Sequence</b>	GDELLNICMNAKHHKRVPSPEDKLYEECIPWKDNACCTLTTSWEAHLDVSPLY NFSLFHCGLLMPCGRKHFIQAICFYECSPNLGPWIQPVGSLGWVAPSGQGE RVVNVPLCQEDCEEWWEDCRMSYTKSNWRGGWDWSQGNRCPKGAQC LPFSHYFPTPADLCEKTWSNSFKASPERRNSGRCLQKWFEPAQGNPNVAVA RLFASSAPSWELSYTIMVCSLFLPFLS
<b>Research Area</b>	Developmental Biology
<b>Source</b>	E.coli
<b>Target Names</b>	IZUMO1R
<b>Protein Names</b>	Recommended name: Probable folate receptor delta Short name= FR-delta Alternative name(s): Folate receptor 4
<b>Expression Region</b>	20-250aa
<b>Notes</b>	Repeated freezing and thawing is not recommended. Store working aliquots at 4°C for up to one week.
<b>Tag Info</b>	N-terminal 6xHis-tagged
<b>Mol. Weight</b>	30.3kDa
<b>Protein Length</b>	Full Length of Mature Protein
<b>Image</b>	



(Tris-Glycine gel) Discontinuous SDS-PAGE (reduced) with 5% enrichment gel and 15% separation gel.



Based on the SEQUEST from database of E.coli host and target protein, the LC-MS/MS Analysis result of CSB-EP008789HU could indicate that this peptide derived from E.coli-expressed Homo sapiens (Human) IZUMO1R.



Based on the SEQUEST from database of E.coli host and target protein, the LC-MS/MS Analysis result of CSB-EP008789HU could indicate that this peptide derived from E.coli-expressed Homo sapiens (Human) IZUMO1R.

## Reconstitution

We recommend that this vial be briefly centrifuged prior to opening to bring the contents to the bottom. Please reconstitute protein in deionized sterile water to a concentration of 0.1-1.0 mg/mL. We recommend to add 5-50% of glycerol (final concentration) and aliquot for long-term storage at -20°C/-80°C. Our default final concentration of glycerol is 50%. Customers could use it as reference.

## Shelf Life

The shelf life is related to many factors, storage state, buffer ingredients, storage temperature and the stability of the protein itself.

Generally, the shelf life of liquid form is 6 months at -20°C/-80°C. The shelf life of lyophilized form is 12 months at -20°C/-80°C.