



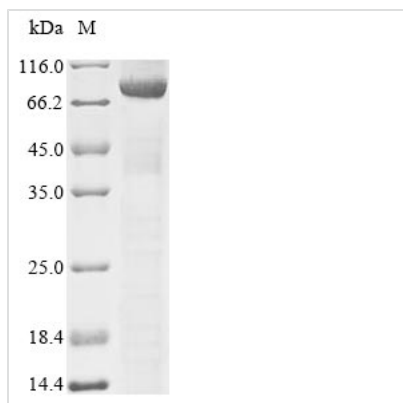
Recombinant Human Dynamin-1-like protein (DNM1L)

Product Code	CSB-EP007078HU
Relevance	Functions in mitochondrial and peroxisomal division. Mediates membrane fission through oligomerization into membrane-associated tubular structures that wrap around the scission site to constrict and sever the mitochondrial membrane through a GTP hydrolysis-dependent mechanism. Through its function in mitochondrial division, ensures the survival of at least some types of postmitotic neurons, including Purkinje cells, by suppressing oxidative damage. Required for normal brain development, including that of cerebellum. Facilitates developmentally regulated apoptosis during neural tube formation. Required for a normal rate of cytochrome c release and caspase activation during apoptosis; this requirement may depend upon the cell type and the physiological apoptotic cues. Plays an important role in mitochondrial fission during mitosis. Required for formation of endocytic vesicles. Proposed to regulate synaptic vesicle membrane dynamics through association with BCL2L1 isoform Bcl-X(L) which stimulates its GTPase activity in synaptic vesicles; the function may require its recruitment by MFF to clathrin-containing vesicles. Required for programmed necrosis execution.
Abbreviation	Recombinant Human DNM1L protein
Storage	The shelf life is related to many factors, storage state, buffer ingredients, storage temperature and the stability of the protein itself. Generally, the shelf life of liquid form is 6 months at -20°C/-80°C. The shelf life of lyophilized form is 12 months at -20°C/-80°C.
Uniprot No.	O00429
Storage Buffer	If the delivery form is liquid, the default storage buffer is Tris/PBS-based buffer, 5%-50% glycerol. If the delivery form is lyophilized powder, the buffer before lyophilization is Tris/PBS-based buffer, 6% Trehalose.
Product Type	Recombinant Proteins
Immunogen Species	Homo sapiens (Human)
Purity	Greater than 85% as determined by SDS-PAGE.
Sequence	MEALIPVINKLQDVFNTVGADIIQLPQIVVVGTTQSSGKSSVLESVGRDLLPRGT GIVTRRPLILQLVHVSQEDKRKTTGEENGVEAEWGWKFLHTKNKLYTDFDEIRQ EIENETERISGNNKGVSPPIHLKIFSPNVNLTLDLPGMTKVPVGDQPKDIEL QIRELILRFISNPNSIILAVTAANTDMATSEALKISREVPDGRRTLAVITKLDLMD AGTDAMDVLMGRVIPVKLGIIGVVNRSQLDINNKKSVTDSIRDEY AFLQKKYPS LANRNGTKYLARTLNRLMHHIRDCLPELKTRINVLAAQYQSLNLSYGEVDDK SATLLQLITKFATEYCNTIEGTAKYIETSELGGARICYIFHETFGRTLESVDPLG GLNTIDILTAIRNATGPRPALFVPEVSFELLVKRQIKRLEEPSLRCVELVHEEMQ RIIQHCSNYSTQELLRFPKLDHDAIVEVVTCLLRKRLPVTNEMVHNLVAIELAYINT KHPDFADACGLMNNNIEEQRRNRLARELPSAVSRDKLIQDSRRETKNVASGG GGVGDGVQEPTTGNWRGMLKTSKAEELLAEEKSKPIPIIMPASPQKGHAVNLL

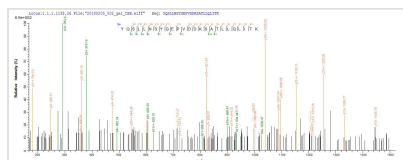


DVPVPVARKLSAREQRDCEVIERLIKSIFLIVRKNIQDSVPAKAVMHFLVNHVKD
 TLQSELVGQLYKSSLLDDLLTESEDMAQRRKEAADMLKALQGASQIIAEIRETH
 LW

Research Area	Cancer
Source	E.coli
Target Names	DNM1L
Protein Names	Dnm1p/Vps1p-like protein (DVLP) (Dynamin family member proline-rich carboxyl-terminal domain less) (Dymple) (Dynamin-like protein) (Dynamin-like protein 4) (Dynamin-like protein IV) (HdynIV) (Dynamin-related protein 1) (DLP1) (DRP1)
Expression Region	1-710aa
Notes	Repeated freezing and thawing is not recommended. Store working aliquots at 4°C for up to one week.
Tag Info	N-terminal 10xHis-tagged and C-terminal Myc-tagged
Mol. Weight	84.4 kDa
Protein Length	Full Length of Isoform 2

Image


(Tris-Glycine gel) Discontinuous SDS-PAGE (reduced) with 5% enrichment gel and 15% separation gel.



Based on the SEQUEST from database of E.coli host and target protein, the LC-MS/MS Analysis result of CSB-EP007078HU could indicate that this peptide derived from E.coli-expressed Homo sapiens (Human) DNM1L.



Based on the SEQUEST from database of E.coli host and target protein, the LC-MS/MS Analysis result of CSB-EP007078HU could indicate that this peptide derived from E.coli-expressed Homo sapiens (Human) DNM1L.

Shelf Life

The shelf life is related to many factors, storage state, buffer ingredients, storage temperature and the stability of the protein itself. Generally, the shelf life of liquid form is 6 months at -20°C/-80°C. The shelf life of lyophilized form is 12 months at -20°C/-80°C.