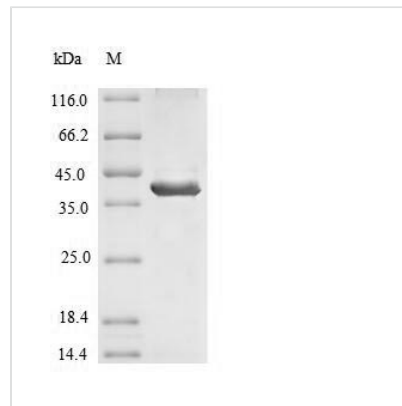




Recombinant Human Signal-regulatory protein beta-1 (SIRPB1), partial

Product Code	CSB-EP021335HU
Relevance	Immunoglobulin-like cell surface receptor involved in the negative regulation of receptor tyrosine kinase-coupled signaling processes. Participates also in the recruitment of tyrosine kinase SYK.
Abbreviation	Recombinant Human SIRPB1 protein, partial
Storage	The shelf life is related to many factors, storage state, buffer ingredients, storage temperature and the stability of the protein itself. Generally, the shelf life of liquid form is 6 months at -20°C/-80°C. The shelf life of lyophilized form is 12 months at -20°C/-80°C.
Uniprot No.	O00241
Alias	Signal-regulatory protein beta-1 Short name:SIRP-beta-1 Alternative name(s): CD172 antigen-like family member B CD_antigen: CD172b
Product Type	Recombinant Protein
Immunogen Species	Homo sapiens (Human)
Purity	≥ 90% as determined by SDS-PAGE.
Sequence	EDELQVIQPEKSVSVAAGESATLRCAMTSLIPVGPIMWFRGAGAGRELIYNQK EGHFPRVTTVSELTKRNNLDFSISISNITPADAGTYCYVKFRKGGSPDDVEFKSG AGTELSVRAKPSAPVVSGPAVRATPEHTVSFTCESHGFSPRDITLKWFKNGNE LSDFQTNVDPAGDSVSYSIHSTARVVLTRGDVHSQVICEIAHITLQGDLRGTA NLSEAIRVPPTLEVTQQPMRAENQANVTCQVSNFYPRGLQLTWLENGNVSRT ETASTLIENKDGTYNWMSWLLVNTCAHRDDVLTQVEHDGQQAVSKSYALE ISAHQKEHGSDITHEAALAPTAPL
Research Area	Signal transduction
Source	E.coli
Target Names	SIRPB1
Protein Names	Recommended name: Signal-regulatory protein beta-1 Short name= SIRP-beta-1 Alternative name(s): CD172 antigen-like family member B CD_antigen= CD172b
Expression Region	30-371aa
Notes	Repeated freezing and thawing is not recommended. Store working aliquots at 4°C for up to one week.
Tag Info	N-terminal 6xHis-tagged
Mol. Weight	41.3kDa
Protein Length	Partial
Image	



(Tris-Glycine gel) Discontinuous SDS-PAGE (reduced) with 5% enrichment gel and 15% separation gel.

Reconstitution

We recommend that this vial be briefly centrifuged prior to opening to bring the contents to the bottom. Please reconstitute protein in deionized sterile water to a concentration of 0.1-1.0 mg/mL. We recommend to add 5-50% of glycerol (final concentration) and aliquot for long-term storage at -20°C/-80°C. Our default final concentration of glycerol is 50%. Customers could use it as reference.

Shelf Life

The shelf life is related to many factors, storage state, buffer ingredients, storage temperature and the stability of the protein itself. Generally, the shelf life of liquid form is 6 months at -20°C/-80°C. The shelf life of lyophilized form is 12 months at -20°C/-80°C.