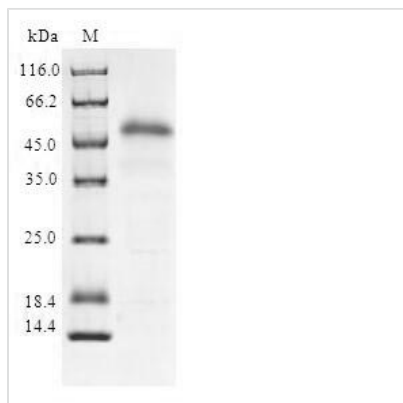




# Recombinant Human Suppressor of cytokine signaling 2 (SOCS2)

<b>Product Code</b>	CSB-EP022389HU
<b>Relevance</b>	SOCS family proteins form part of a classical negative feedback system that regulates cytokine signal transduction. SOCS2 appears to be a negative regulator in the growth hormone/IGF1 signaling pathway. Probable substrate recognition component of a SCF-like ECS (Elongin BC-CUL2/5-SOCS-box protein) E3 ubiquitin-protein ligase complex which mediates the ubiquitination and subsequent proteasomal degradation of target proteins.
<b>Abbreviation</b>	Recombinant Human SOCS2 protein
<b>Storage</b>	The shelf life is related to many factors, storage state, buffer ingredients, storage temperature and the stability of the protein itself. Generally, the shelf life of liquid form is 6 months at -20°C/-80°C. The shelf life of lyophilized form is 12 months at -20°C/-80°C.
<b>Uniprot No.</b>	O14508
<b>Alias</b>	Cytokine-inducible SH2 protein 2
<b>Product Type</b>	Recombinant Protein
<b>Immunogen Species</b>	Homo sapiens (Human)
<b>Purity</b>	≥ 90% as determined by SDS-PAGE.
<b>Sequence</b>	MTLRCLEPSGNGGEGTRSQWGTAGSAEESPQAARLAKALRELGQTGWYW GSMTVNEAKEKLKEAPEGTFILIRDSSHSDYLLTISVKTSAGPTNLRIEYQDQGF RLDSIICVKSKLKQFDSVVHLIDYYVQMCKDKRTGPEAPRNGTVHLYLTKPLYT SAPSLQHLCLRTINKCTGAIWGLPLPTRLKDYLEEYKFQV
<b>Research Area</b>	Immunology
<b>Source</b>	E.coli
<b>Target Names</b>	SOCS2
<b>Protein Names</b>	Recommended name: Suppressor of cytokine signaling 2 Short name= SOCS-2 Alternative name(s): Cytokine-inducible SH2 protein 2 Short name= CIS-2 STAT-induced STAT inhibitor 2 Short name= SSI-2
<b>Expression Region</b>	1-198aa
<b>Notes</b>	Repeated freezing and thawing is not recommended. Store working aliquots at 4°C for up to one week.
<b>Tag Info</b>	N-terminal GST-tagged
<b>Mol. Weight</b>	49.2kDa
<b>Protein Length</b>	Full Length
<b>Image</b>	



(Tris-Glycine gel) Discontinuous SDS-PAGE (reduced) with 5% enrichment gel and 15% separation gel.

### Reconstitution

We recommend that this vial be briefly centrifuged prior to opening to bring the contents to the bottom. Please reconstitute protein in deionized sterile water to a concentration of 0.1-1.0 mg/mL. We recommend to add 5-50% of glycerol (final concentration) and aliquot for long-term storage at -20°C/-80°C. Our default final concentration of glycerol is 50%. Customers could use it as reference.

### Shelf Life

The shelf life is related to many factors, storage state, buffer ingredients, storage temperature and the stability of the protein itself. Generally, the shelf life of liquid form is 6 months at -20°C/-80°C. The shelf life of lyophilized form is 12 months at -20°C/-80°C.