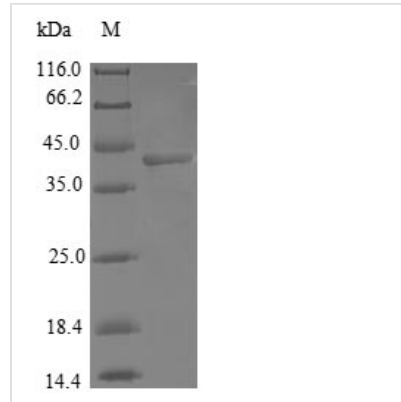




Recombinant Human Cytochrome c oxidase subunit 7A-related protein, mitochondrial (COX7A2L)

Product Code	CSB-EP005862HU
Relevance	Involved in the regulation of oxidative phosphorylation and energy metabolism. Necessary for the assembly of mitochondrial respiratory supercomplex
Abbreviation	Recombinant Human COX7A2L protein
Storage	The shelf life is related to many factors, storage state, buffer ingredients, storage temperature and the stability of the protein itself. Generally, the shelf life of liquid form is 6 months at -20°C/-80°C. The shelf life of lyophilized form is 12 months at -20°C/-80°C.
Uniprot No.	O14548
Alias	COX7a-related protein Cytochrome c oxidase subunit VIIa-related protein EB1
Product Type	Recombinant Protein
Immunogen Species	Homo sapiens (Human)
Purity	≥ 90% as determined by SDS-PAGE.
Sequence	MYYKFSGFTQKLAGAWASEAYSPQGLKPVVSTEAPPIIFATPTKLTSDSTVYDY AGKNKVPQLKFFQKADGVPVYLKRGLPDQMLYRRTTMALTVGGTIYCLIALYM ASQPKNK
Research Area	Signal Transduction
Source	E.coli
Target Names	COX7A2L
Protein Names	Recommended name: Cytochrome c oxidase subunit 7A-related protein, mitochondrial Alternative name(s): COX7a-related protein Cytochrome c oxidase subunit VIIa-related protein EB1
Expression Region	1-114aa
Notes	Repeated freezing and thawing is not recommended. Store working aliquots at 4°C for up to one week.
Tag Info	N-terminal GST-tagged
Mol. Weight	39.6kDa
Protein Length	Full Length
Image	



(Tris-Glycine gel) Discontinuous SDS-PAGE (reduced) with 5% enrichment gel and 15% separation gel.

Reconstitution

We recommend that this vial be briefly centrifuged prior to opening to bring the contents to the bottom. Please reconstitute protein in deionized sterile water to a concentration of 0.1-1.0 mg/mL. We recommend to add 5-50% of glycerol (final concentration) and aliquot for long-term storage at -20°C/-80°C. Our default final concentration of glycerol is 50%. Customers could use it as reference.

Shelf Life

The shelf life is related to many factors, storage state, buffer ingredients, storage temperature and the stability of the protein itself. Generally, the shelf life of liquid form is 6 months at -20°C/-80°C. The shelf life of lyophilized form is 12 months at -20°C/-80°C.