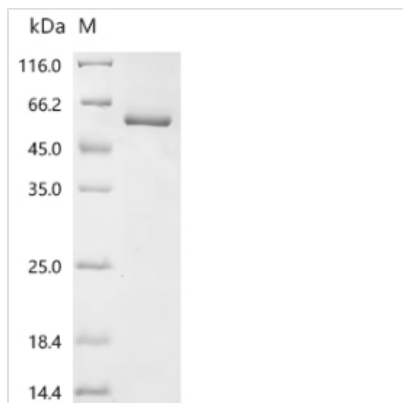




Recombinant Human Phospholipid scramblase 1 (PLSCR1)

Product Code	CSB-EP018207HU
Relevance	May mediate accelerated ATP-independent bidirectional transbilayer migration of phospholipids upon binding calcium ions that results in a loss of phospholipid asymmetry in the plasma membrane. May play a central role in the initiation of fibrin clot formation, in the activation of mast cells and in the recognition of apoptotic and injured cells by the reticuloendothelial system. May play a role in the antiviral response of interferon (IFN) by amplifying and enhancing the IFN response through increased expression of select subset of potent antiviral genes. May contribute to cytokine-regulated cell proliferation and differentiation.
Abbreviation	Recombinant Human PLSCR1 protein
Storage	The shelf life is related to many factors, storage state, buffer ingredients, storage temperature and the stability of the protein itself. Generally, the shelf life of liquid form is 6 months at -20°C/-80°C. The shelf life of lyophilized form is 12 months at -20°C/-80°C.
Uniprot No.	O15162
Product Type	Recombinant Proteins
Immunogen Species	Homo sapiens (Human)
Purity	Greater than 90% as determined by SDS-PAGE.
Sequence	MDKQNSQMNASHPETNLPVGYPPQYPPTAFQGPPGYSGYPGPQVSYPPPPA GHS GPGPAGFPVNPQPVYNQPVYNQPVGAAGVPWMPAPQPPLNCPPGLE Y LSQIDQILIHQQIELLEVL TGFETNNKYEIKNSFGQRVYFAAEDTDCCTR NCCGP SRPFTLR IIDNMGQEVITLERPLRCSSCCCPCLQEIEIQAPPGVPIGYVIQ TWH PCLPKFTIQNEKREDVLKISGPCVVCSCCGDVDFEIKSLDEQC VVGKISKHWTG ILREAFTDADNFGIQFPLDL DVKMKAVMIGACFLIDFMFFESTGSQE QKSGVW
Research Area	Microbiology
Source	E.coli
Target Names	PLSCR1
Expression Region	1-318aa
Notes	Repeated freezing and thawing is not recommended. Store working aliquots at 4°C for up to one week.
Tag Info	N-terminal GST-tagged
Mol. Weight	61.7 kDa
Protein Length	Full Length
Image	



(Tris-Glycine gel) Discontinuous SDS-PAGE (reduced) with 5% enrichment gel and 15% separation gel.

Shelf Life

The shelf life is related to many factors, storage state, buffer ingredients, storage temperature and the stability of the protein itself.

Generally, the shelf life of liquid form is 6 months at -20°C/-80°C. The shelf life of lyophilized form is 12 months at -20°C/-80°C.