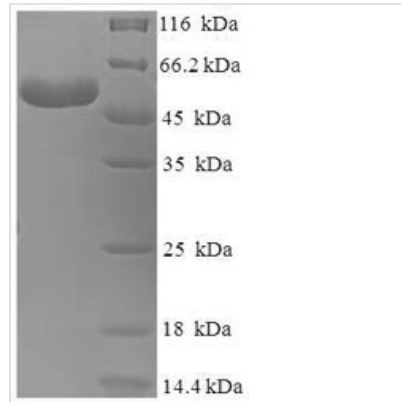




Recombinant Human Branched-chain-amino-acid aminotransferase, mitochondrial (BCAT2)

Product Code	CSB-EP002601HU
Relevance	Catalyzes the first reaction in the catabolism of the essential branched chain amino acids leucine, isoleucine, and valine. May also function as a transporter of branched chain alpha-keto acids.
Abbreviation	Recombinant Human BCAT2 protein
Storage	The shelf life is related to many factors, storage state, buffer ingredients, storage temperature and the stability of the protein itself. Generally, the shelf life of liquid form is 6 months at -20°C/-80°C. The shelf life of lyophilized form is 12 months at -20°C/-80°C.
Uniprot No.	O15382
Alias	Placental protein 18 ;PP18
Product Type	Recombinant Protein
Immunogen Species	Homo sapiens (Human)
Purity	≥ 90% as determined by SDS-PAGE.
Sequence	ASSSFKAADLQLEMTQKPHKKPGPGEPLVFGKTFTDHMLMVEWNDKGGWGQP RIQPFQNLTLHPASSSLHYSLQLFEGMKAFKGDQVRLFRPWLNMDRMLRS AMRLCLPSFDKLELLEECIRRLIEVDKDWVPDAAGTSLYVRPVLIGNEPSLGVSQ PTRALLFVILCPVGAYFPGGSVTPVSLLADPAFIRAWVGGVGNKLGNYGPT VLVQQEALKRGCEQVLWLYGPDHQLTEVGTMNIFVYWTHEDGVLELVTPPLN GVILPGVVRQSLLDMAQTWGEFRVVERTITMKQLLRAL E EGRVREVFSGSTA CQVCPVHRILYKDRNLHIPTMENGPELILRFQKELKEIQYGIRAH EWMFPV
Research Area	Metabolism
Source	E.coli
Target Names	BCAT2
Expression Region	28-392aa
Notes	Repeated freezing and thawing is not recommended. Store working aliquots at 4°C for up to one week.
Tag Info	N-terminal 6xHis-SUMO-tagged
Mol. Weight	57.3kDa
Protein Length	Full Length of Mature Protein
Image	



(Tris-Glycine gel) Discontinuous SDS-PAGE (reduced) with 5% enrichment gel and 15% separation gel.

Reconstitution

We recommend that this vial be briefly centrifuged prior to opening to bring the contents to the bottom. Please reconstitute protein in deionized sterile water to a concentration of 0.1-1.0 mg/mL. We recommend to add 5-50% of glycerol (final concentration) and aliquot for long-term storage at $-20^{\circ}\text{C}/-80^{\circ}\text{C}$. Our default final concentration of glycerol is 50%. Customers could use it as reference.

Shelf Life

The shelf life is related to many factors, storage state, buffer ingredients, storage temperature and the stability of the protein itself. Generally, the shelf life of liquid form is 6 months at $-20^{\circ}\text{C}/-80^{\circ}\text{C}$. The shelf life of lyophilized form is 12 months at $-20^{\circ}\text{C}/-80^{\circ}\text{C}$.