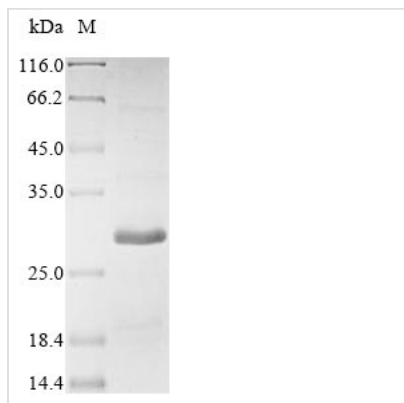




Recombinant Rat Gremlin-1 (Grem1)

| | |
|--------------------------|---|
| Product Code | CSB-BP009892RA |
| Relevance | Cytokine that may play an important role during carcinogenesis and metanephric kidney organogenesis, as a BMP antagonist required for early limb outgrowth and patterning in maintaining the FGF4-SHH feedback loop. Down-regulates the BMP4 signaling in a dose-dependent manner. Antagonist of BMP2; inhibits BMP2-mediated differentiation of osteoblasts (in vitro). Acts as inhibitor of monocyte chemotaxis. Can inhibit the growth or viability of normal cells but not transformed cells when is overexpressed. |
| Abbreviation | Recombinant Rat Grem1 protein |
| Storage | The shelf life is related to many factors, storage state, buffer ingredients, storage temperature and the stability of the protein itself. Generally, the shelf life of liquid form is 6 months at -20°C/-80°C. The shelf life of lyophilized form is 12 months at -20°C/-80°C. |
| Uniprot No. | O35793 |
| Product Type | Recombinant Protein |
| Immunogen Species | Rattus norvegicus (Rat) |
| Purity | Greater than 85% as determined by SDS-PAGE. |
| Sequence | KKKGSQGAIPPPDKAQHNDSEQTQSPQPGRSRTGRGQGRGTAMPGEEVLE SSQEALHVTERKYLKRDWCKTQPLKQTIHEEGCNSRTIINRFCYGCNSFYIPR HIRKEEGSFQSCSFCKPKKFTTMMVTLNCPQLQPPTKKKRVTTRVKQCRCISIDL D |
| Research Area | Cardiovascular |
| Source | Baculovirus |
| Target Names | Grem1 |
| Protein Names | Cysteine knot superfamily 1, BMP antagonist 1 Down-regulated in Mos-transformed cells protein Cktsf1b1, Drm |
| Expression Region | 25-184aa |
| Notes | Repeated freezing and thawing is not recommended. Store working aliquots at 4°C for up to one week. |
| Tag Info | N-terminal 10xHis-tagged and C-terminal Myc-tagged |
| Mol. Weight | 22.2 kDa |
| Protein Length | Full Length of Mature Protein |
| Image | |



(Tris-Glycine gel) Discontinuous SDS-PAGE (reduced) with 5% enrichment gel and 15% separation gel.

Reconstitution

We recommend that this vial be briefly centrifuged prior to opening to bring the contents to the bottom. Please reconstitute protein in deionized sterile water to a concentration of 0.1-1.0 mg/mL. We recommend to add 5-50% of glycerol (final concentration) and aliquot for long-term storage at -20°C/-80°C. Our default final concentration of glycerol is 50%. Customers could use it as reference.

Shelf Life

The shelf life is related to many factors, storage state, buffer ingredients, storage temperature and the stability of the protein itself. Generally, the shelf life of liquid form is 6 months at -20°C/-80°C. The shelf life of lyophilized form is 12 months at -20°C/-80°C.