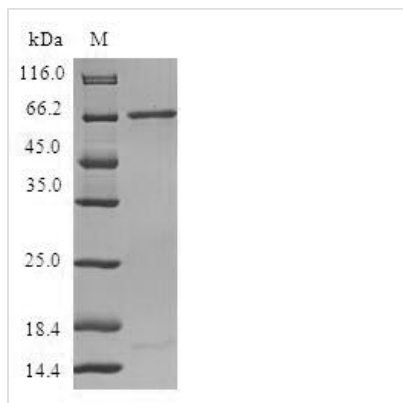




Recombinant Human Protein XRP2 (RP2)

Product Code	CSB-EP020076HU
Relevance	Acts as a GTPase-activating protein (GAP) involved in trafficking between the Golgi and the ciliary membrane. Involved in localization of proteins, such as NPHP3, to the cilium membrane by inducing hydrolysis of GTP ARL3, leading to the release of UNC119 (or UNC119B). Acts as a GTPase-activating protein (GAP) for tubulin in concert with tubulin-specific chaperone C, but does not enhance tubulin heterodimerization. Acts as guanine nucleotide dissociation inhibitor towards ADP-ribosylation factor-like proteins.
Abbreviation	Recombinant Human RP2 protein
Storage	The shelf life is related to many factors, storage state, buffer ingredients, storage temperature and the stability of the protein itself. Generally, the shelf life of liquid form is 6 months at -20°C/-80°C. The shelf life of lyophilized form is 12 months at -20°C/-80°C.
Uniprot No.	O75695
Product Type	Recombinant Protein
Immunogen Species	Homo sapiens (Human)
Purity	≥ 90% as determined by SDS-PAGE.
Sequence	GCFFSKRRKADKESRPENEEERPKQYSWDQREKVDPKDYMFSGLKDETVGR LPGTVAGQQFLIQDCENCNIYIFDHSATVTIDDCTNCIIFLGPVKGSVFFRNCRD CKCTLACQQFRVRDCRKLEVFLCCATQPIIESSSNIKFGCFQWYYPELAFQFK DAGLSIFNNTWSNIHDFTPVSGELNWSLLPEDAVVQDYVPIPTTEELKAVRVST EANRSIVPISRGQRQKSSDESCLVVLFAGDYTIANARKLIDEMVGKGFLLVQTK EVSMKAEDAQRVFREKAPDFLPLLNKGPVIALEFNGDGAVEVCQLIVNEIFNGT KMFVSESKETASGDVDSFYNFADIQMG I
Research Area	Neuroscience
Source	E.coli
Target Names	RP2
Protein Names	Recommended name: Protein XRP2
Expression Region	1-350aa
Notes	Repeated freezing and thawing is not recommended. Store working aliquots at 4°C for up to one week.
Tag Info	N-terminal GST-tagged
Mol. Weight	66.5kDa
Protein Length	Full Length
Image	



(Tris-Glycine gel) Discontinuous SDS-PAGE (reduced) with 5% enrichment gel and 15% separation gel.

Reconstitution

We recommend that this vial be briefly centrifuged prior to opening to bring the contents to the bottom. Please reconstitute protein in deionized sterile water to a concentration of 0.1-1.0 mg/mL. We recommend to add 5-50% of glycerol (final concentration) and aliquot for long-term storage at -20°C/-80°C. Our default final concentration of glycerol is 50%. Customers could use it as reference.

Shelf Life

The shelf life is related to many factors, storage state, buffer ingredients, storage temperature and the stability of the protein itself. Generally, the shelf life of liquid form is 6 months at -20°C/-80°C. The shelf life of lyophilized form is 12 months at -20°C/-80°C.