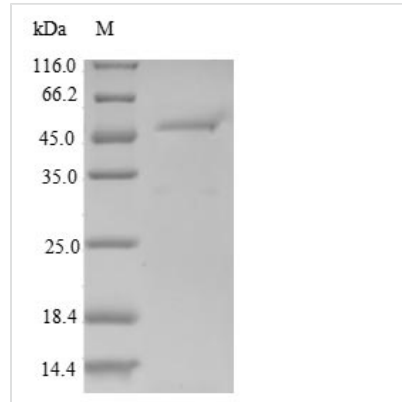




# Recombinant Human Regulator of G-protein signaling 10 (RGS10)

<b>Product Code</b>	CSB-EP019642HU
<b>Relevance</b>	Regulates G protein-coupled receptor signaling cascades, including signaling downstream of the muscarinic acetylcholine receptor CHRM2. Inhibits signal transduction by increasing the GTPase activity of G protein alpha subunits, thereby driving them into their inactive GDP-bound form. Modulates the activity of potassium channels that are activated in response to CHRM2 signaling. Activity on GNAZ is inhibited by palmitoylation of the G-protein
<b>Abbreviation</b>	Recombinant Human RGS10 protein
<b>Storage</b>	The shelf life is related to many factors, storage state, buffer ingredients, storage temperature and the stability of the protein itself. Generally, the shelf life of liquid form is 6 months at -20°C/-80°C. The shelf life of lyophilized form is 12 months at -20°C/-80°C.
<b>Uniprot No.</b>	O43665
<b>Product Type</b>	Recombinant Protein
<b>Immunogen Species</b>	Homo sapiens (Human)
<b>Purity</b>	≥ 90% as determined by SDS-PAGE.
<b>Sequence</b>	MFNRAVSRLSRKRPPSDIHDSGSSSSSHQSLKSTAKWAASLENLLEDPEGV KRFREFLKKEFSEENVLFWLACEDFKKMQDKTQMQEKAKEIYMTFLSSKASS QVNVEGQSRLNEKILEEPHPLMFQKLQDQIFNLMKYDSYSRFLKSDLFLKHKR TEEEEEEDLPDAQTAAKRASRIYNT
<b>Research Area</b>	Signal Transduction
<b>Source</b>	E.coli
<b>Target Names</b>	RGS10
<b>Protein Names</b>	Recommended name: Regulator of G-protein signaling 10 Short name= RGS10
<b>Expression Region</b>	1-181aa
<b>Notes</b>	Repeated freezing and thawing is not recommended. Store working aliquots at 4°C for up to one week.
<b>Tag Info</b>	N-terminal GST-tagged
<b>Mol. Weight</b>	48.2kDa
<b>Protein Length</b>	Full Length of Isoform 3
<b>Image</b>	



(Tris-Glycine gel) Discontinuous SDS-PAGE (reduced) with 5% enrichment gel and 15% separation gel.

### Reconstitution

We recommend that this vial be briefly centrifuged prior to opening to bring the contents to the bottom. Please reconstitute protein in deionized sterile water to a concentration of 0.1-1.0 mg/mL. We recommend to add 5-50% of glycerol (final concentration) and aliquot for long-term storage at -20°C/-80°C. Our default final concentration of glycerol is 50%. Customers could use it as reference.

### Shelf Life

The shelf life is related to many factors, storage state, buffer ingredients, storage temperature and the stability of the protein itself. Generally, the shelf life of liquid form is 6 months at -20°C/-80°C. The shelf life of lyophilized form is 12 months at -20°C/-80°C.