

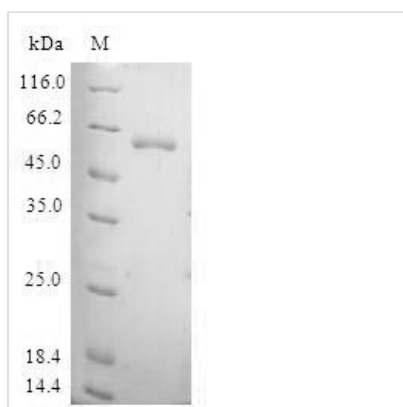


# Recombinant Human TAF5-like RNA polymerase II p300/CBP-associated factor-associated factor 65 kDa subunit 5L (TAF5L)

<b>Product Code</b>	CSB-EP023093HU
<b>Relevance</b>	Functions as a component of the PCAF complex. The PCAF complex is capable of efficiently acetylating histones in a nucleosomal context. The PCAF complex could be considered as the human version of the yeast SAGA complex.
<b>Abbreviation</b>	Recombinant Human TAF5L protein
<b>Storage</b>	The shelf life is related to many factors, storage state, buffer ingredients, storage temperature and the stability of the protein itself. Generally, the shelf life of liquid form is 6 months at -20°C/-80°C. The shelf life of lyophilized form is 12 months at -20°C/-80°C.
<b>Uniprot No.</b>	O75529
<b>Alias</b>	PCAF-associated factor 65 beta
<b>Product Type</b>	Recombinant Protein
<b>Immunogen Species</b>	Homo sapiens (Human)
<b>Purity</b>	Greater than 90% as determined by SDS-PAGE.
<b>Sequence</b>	MKRVRTEQIQMAVSCYLKRRQYVDSGGLKQGLRRLSQTAEEMAANLTVQSES GCANIVSAAPCQAEPQQYEVQFGRLRNFLTSDSQHSHEVMPLLYPLFVYLHL NLVQNSPKSTVESFYSRFHGMFLQNASQKDVIEQLQTTQTIQDILSNFKLRAFL DNKYVVRLQEDSYNYLIRYLQSDNNTALCKVLTLLHIHLVDVQPAKRTDYQLYASG SSSRSENGLEPPDMPSPILQNEAALEVLQESIKRVKDGPPSLTTICFYAFYNT EQLLNTAEISPDSKLLAAGFDNSCIKLWLSLRSKKLKSEPHQVDVSRHLACDILE EEV
<b>Research Area</b>	Epigenetics and Nuclear Signaling
<b>Source</b>	E.coli
<b>Target Names</b>	TAF5L
<b>Protein Names</b>	Recommended name: TAF5-like RNA polymerase II p300/CBP-associated factor-associated factor 65 kDa subunit 5L Alternative name(s): PCAF-associated factor 65 beta Short name= PAF65-beta
<b>Expression Region</b>	1-325aa
<b>Notes</b>	Repeated freezing and thawing is not recommended. Store working aliquots at 4°C for up to one week.
<b>Tag Info</b>	N-terminal GST-tagged
<b>Mol. Weight</b>	64.0kDa
<b>Protein Length</b>	Full Length of Isoform 2



## Image



(Tris-Glycine gel) Discontinuous SDS-PAGE (reduced) with 5% enrichment gel and 15% separation gel.

## Reconstitution

We recommend that this vial be briefly centrifuged prior to opening to bring the contents to the bottom. Please reconstitute protein in deionized sterile water to a concentration of 0.1-1.0 mg/mL. We recommend to add 5-50% of glycerol (final concentration) and aliquot for long-term storage at -20°C/-80°C. Our default final concentration of glycerol is 50%. Customers could use it as reference.

## Shelf Life

The shelf life is related to many factors, storage state, buffer ingredients, storage temperature and the stability of the protein itself.

Generally, the shelf life of liquid form is 6 months at -20°C/-80°C. The shelf life of lyophilized form is 12 months at -20°C/-80°C.