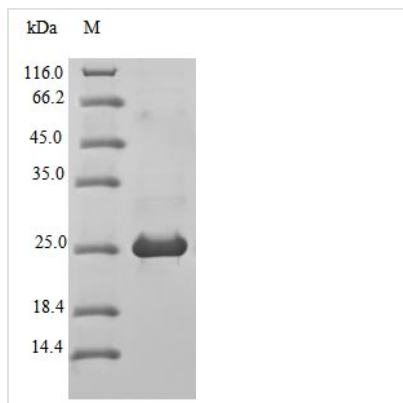




Recombinant Mouse Bloom syndrome protein homolog (Blm), partial

Product Code	CSB-EP002715MO
Relevance	Participates in DNA replication and repair. Exhibits a magnesium-dependent ATP-dependent DNA-helicase activity that unwinds single- and double-stranded DNA in a 3'-5' direction. Involved in 5'-end resection of DNA during double-strand break (DSB) repair: unwinds DNA and recruits DNA2 which mediates the cleavage of 5'-ssDNA. Negatively regulates sister chromatid exchange (SCE)
Abbreviation	Recombinant Mouse Blm protein, partial
Storage	The shelf life is related to many factors, storage state, buffer ingredients, storage temperature and the stability of the protein itself. Generally, the shelf life of liquid form is 6 months at -20°C/-80°C. The shelf life of lyophilized form is 12 months at -20°C/-80°C.
Uniprot No.	O88700
Alias	RecQ helicase homolog
Product Type	Recombinant Protein
Immunogen Species	Mus musculus (Mouse)
Purity	≥ 90% as determined by SDS-PAGE.
Sequence	INAALLGEDCFILMPTGGGKSLCYQLPACVSPGVTVISPLRSLIVDQVQKLTSE DIPATYLTGDKTDSEAANIYLQLSKKDPIIKLLYVTPEKVCASNRLISTLENLYER KLLARFVIDEAHCVSQWGHDFRQDYKRMNMLRQKFPSVPMALTATANPRV QKDILTQLKILRPQ
Research Area	Neuroscience
Source	E.coli
Target Names	Blm
Protein Names	Recommended name: Bloom syndrome protein homolog Short name= mBLM EC= 3.6.4.12 Alternative name(s): RecQ helicase homolog
Expression Region	684-859aa
Notes	Repeated freezing and thawing is not recommended. Store working aliquots at 4°C for up to one week.
Tag Info	N-terminal 10xHis-tagged and C-terminal MYC-tagged
Mol. Weight	24.7kDa
Protein Length	Partial
Image	



(Tris-Glycine gel) Discontinuous SDS-PAGE (reduced) with 5% enrichment gel and 15% separation gel.

Reconstitution

We recommend that this vial be briefly centrifuged prior to opening to bring the contents to the bottom. Please reconstitute protein in deionized sterile water to a concentration of 0.1-1.0 mg/mL. We recommend to add 5-50% of glycerol (final concentration) and aliquot for long-term storage at -20°C/-80°C. Our default final concentration of glycerol is 50%. Customers could use it as reference.

Shelf Life

The shelf life is related to many factors, storage state, buffer ingredients, storage temperature and the stability of the protein itself. Generally, the shelf life of liquid form is 6 months at -20°C/-80°C. The shelf life of lyophilized form is 12 months at -20°C/-80°C.