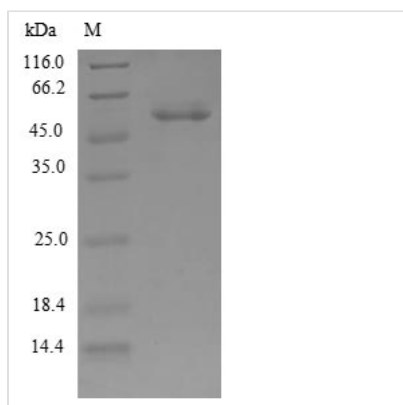




Recombinant Human Cleavage and polyadenylation specificity factor subunit 4 (CPSF)

Product Code	CSB-EP005919HU
Relevance	Component of the cleavage and polyadenylation specificity factor (CPSF) complex that play a key role in pre-mRNA 3'-end formation, recognizing the AAUAAA signal sequence and interacting with poly(A) polymerase and other factors to bring about cleavage and poly(A) addition. CPSF4 binds RNA polymers with a preference for poly(U).
Abbreviation	Recombinant Human CPSF4 protein
Storage	The shelf life is related to many factors, storage state, buffer ingredients, storage temperature and the stability of the protein itself. Generally, the shelf life of liquid form is 6 months at -20°C/-80°C. The shelf life of lyophilized form is 12 months at -20°C/-80°C.
Uniprot No.	O95639
Alias	Cleavage and polyadenylation specificity factor 30 kDa subunit
Product Type	Recombinant Protein
Immunogen Species	Homo sapiens (Human)
Purity	Greater than 90% as determined by SDS-PAGE.
Sequence	MQEIIASVDHIKFDLEIAVEQQLGAQPLPFPGMDSGAAVCEFFLKAACGKGG MCPFRHISGEKTVVCKHWLRGLCKKGDQCEFLHEYDMTKMPECYFYSKFGE CSNKECPFLHIDPESKIKDCPWYDRGFCKHGPLCRHRHTRRVICVNYLVGFCEP EGPSCKFMHPRFELPMGTTEQPPLPQQTQPPAKQRTPQVIGVMQSQNSSAG NRGPRPLEQVTCYKCGEKGHYANRCTKGHLAFLSGQ
Research Area	Microbiology
Source	E.coli
Target Names	CPSF4
Protein Names	Recommended name: Cleavage and polyadenylation specificity factor subunit 4 Alternative name(s): Cleavage and polyadenylation specificity factor 30 kDa subunit Short name= CPSF 30 kDa subunit NS1 effector domain-binding protein 1 Short na
Expression Region	1-244aa
Notes	Repeated freezing and thawing is not recommended. Store working aliquots at 4°C for up to one week.
Tag Info	N-terminal GST-tagged
Mol. Weight	54.5kDa
Protein Length	Full Length of Isoform 2
Image	



(Tris-Glycine gel) Discontinuous SDS-PAGE (reduced) with 5% enrichment gel and 15% separation gel.

Reconstitution

We recommend that this vial be briefly centrifuged prior to opening to bring the contents to the bottom. Please reconstitute protein in deionized sterile water to a concentration of 0.1-1.0 mg/mL. We recommend to add 5-50% of glycerol (final concentration) and aliquot for long-term storage at -20°C/-80°C. Our default final concentration of glycerol is 50%. Customers could use it as reference.

Shelf Life

The shelf life is related to many factors, storage state, buffer ingredients, storage temperature and the stability of the protein itself. Generally, the shelf life of liquid form is 6 months at -20°C/-80°C. The shelf life of lyophilized form is 12 months at -20°C/-80°C.