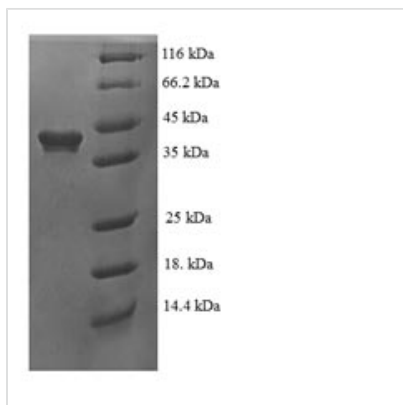


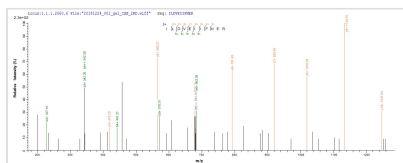


Recombinant Human RNA binding protein fox-1 homolog 2 (RBFOX2)

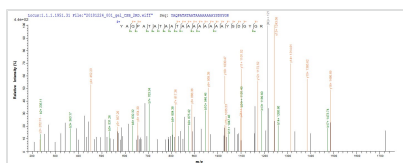
Product Code	CSB-EP019439HU
Relevance	RNA-binding protein that regulates alternative splicing events by binding to 5'-UGCAUGU-3' elements. Prevents binding of U2AF2 to the 3'-splice site. Regulates alternative splicing of tissue-specific exons and of differentially spliced exons during erythropoiesis. RNA-binding protein that seems to act as a coregulatory factor of ER-alpha.1 Publication
Abbreviation	Recombinant Human RBFOX2 protein
Storage	The shelf life is related to many factors, storage state, buffer ingredients, storage temperature and the stability of the protein itself. Generally, the shelf life of liquid form is 6 months at -20°C/-80°C. The shelf life of lyophilized form is 12 months at -20°C/-80°C.
Uniprot No.	O43251
Alias	Fox-1 homolog BHexaribonucleotide-binding protein 2RNA-binding motif protein 9RNA-binding protein 9Repressor of tamoxifen transcriptional activity
Product Type	Recombinant Protein
Immunogen Species	Homo sapiens (Human)
Purity	≥ 90% as determined by SDS-PAGE.
Sequence	MEKKKMVTQGNQEPTTTPDAMVQPFTTIPFPPPPQNGIPTEYGVPHQTQDYAG QTGEHNLTLYGSTQAHGEQSSNSPSTQNGSLTTEGGAQTDGQQSQTQSSSEN SESKSTPKRLHVSNIPIFRFRDPDLRQMFQFGKILDVEIIFNERGSKGFGFVTF ENSADADRAREKLHGTVVEGRKIEVNNATARVMTNKKMVTPTYANGWKLSPVV GAVYGPETYAASSFQADVSLGNDAAVPLSGRGGINTYIPLISLPLVPGFFPYPTA ATTAFAFRGAHLRGRGRTVYGAVRAVPPTAIPAYPGVVYQDGFYGADLYGGY AAYRYAQPATATAATAAAAAAAAAAYS DGYGRVYTADPYHALAPAASYGVGAVA SLYRGGYSRFAPY
Research Area	Transcription
Source	E.coli
Target Names	RBFOX2
Expression Region	1-380aa
Notes	Repeated freezing and thawing is not recommended. Store working aliquots at 4°C for up to one week.
Tag Info	N-terminal 6xHis-tagged
Mol. Weight	44.4kDa
Protein Length	Full Length of Isoform 10
Image	



(Tris-Glycine gel) Discontinuous SDS-PAGE (reduced) with 5% enrichment gel and 15% separation gel.



Based on the SEQUEST from database of E.coli host and target protein, the LC-MS/MS Analysis result of CSB-EP019439HU could indicate that this peptide derived from E.coli-expressed Homo sapiens (Human) RBFOX2.



Based on the SEQUEST from database of E.coli host and target protein, the LC-MS/MS Analysis result of CSB-EP019439HU could indicate that this peptide derived from E.coli-expressed Homo sapiens (Human) RBFOX2.

Reconstitution

We recommend that this vial be briefly centrifuged prior to opening to bring the contents to the bottom. Please reconstitute protein in deionized sterile water to a concentration of 0.1-1.0 mg/mL. We recommend to add 5-50% of glycerol (final concentration) and aliquot for long-term storage at -20°C/-80°C. Our default final concentration of glycerol is 50%. Customers could use it as reference.

Shelf Life

The shelf life is related to many factors, storage state, buffer ingredients, storage temperature and the stability of the protein itself. Generally, the shelf life of liquid form is 6 months at -20°C/-80°C. The shelf life of lyophilized form is 12 months at -20°C/-80°C.