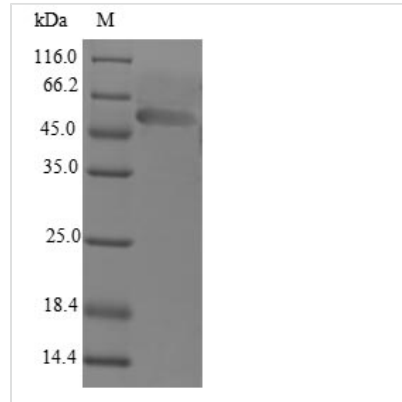




# Recombinant Human LIM domain-binding protein 3 (LDB3)

<b>Product Code</b>	CSB-EP012831HU
<b>Relevance</b>	May function as an adapter in striated muscle to couple protein kinase C-mediated signaling via its LIM domains to the cytoskeleton.
<b>Abbreviation</b>	Recombinant Human LDB3 protein
<b>Storage</b>	The shelf life is related to many factors, storage state, buffer ingredients, storage temperature and the stability of the protein itself. Generally, the shelf life of liquid form is 6 months at -20°C/-80°C. The shelf life of lyophilized form is 12 months at -20°C/-80°C.
<b>Uniprot No.</b>	O75112
<b>Alias</b>	Protein cypher Z-band alternatively spliced PDZ-motif protein
<b>Product Type</b>	Recombinant Protein
<b>Immunogen Species</b>	Homo sapiens (Human)
<b>Purity</b>	Greater than 90% as determined by SDS-PAGE.
<b>Sequence</b>	MSYSVTLTGPGPWGFRLQGGKDFNMPLTISRITPGSKAAQSQLSQGDLVVAID GVNTDTMTHLEAQNKIKSASYNLSLTLQKSKRPIPISTTAPPVQTPLPVIHQKV VVNSPANADYQERFNPSALKDSALSTHKPIEVKGLGGKATIIHAQYNTPISMYS QDAIMDAIAGQAQAQGSDFSGSLPIKDLAVDSASPVYQAVIKSQNKPEDEADE WARRSSNLQSRFRILAQMTGTEFMQDPDEEALRRSRERFETERNSPRFAKL RNWHHGLSAQILNVKS
<b>Research Area</b>	Signal Transduction
<b>Source</b>	E.coli
<b>Target Names</b>	LDB3
<b>Protein Names</b>	Recommended name: LIM domain-binding protein 3 Alternative name(s): Protein cypher Z-band alternatively spliced PDZ-motif protein
<b>Expression Region</b>	1-283aa
<b>Notes</b>	Repeated freezing and thawing is not recommended. Store working aliquots at 4°C for up to one week.
<b>Tag Info</b>	N-terminal GST-tagged
<b>Mol. Weight</b>	58.0kDa
<b>Protein Length</b>	Full Length of Isoform 6
<b>Image</b>	



(Tris-Glycine gel) Discontinuous SDS-PAGE (reduced) with 5% enrichment gel and 15% separation gel.

### Reconstitution

We recommend that this vial be briefly centrifuged prior to opening to bring the contents to the bottom. Please reconstitute protein in deionized sterile water to a concentration of 0.1-1.0 mg/mL. We recommend to add 5-50% of glycerol (final concentration) and aliquot for long-term storage at -20°C/-80°C. Our default final concentration of glycerol is 50%. Customers could use it as reference.

### Shelf Life

The shelf life is related to many factors, storage state, buffer ingredients, storage temperature and the stability of the protein itself. Generally, the shelf life of liquid form is 6 months at -20°C/-80°C. The shelf life of lyophilized form is 12 months at -20°C/-80°C.