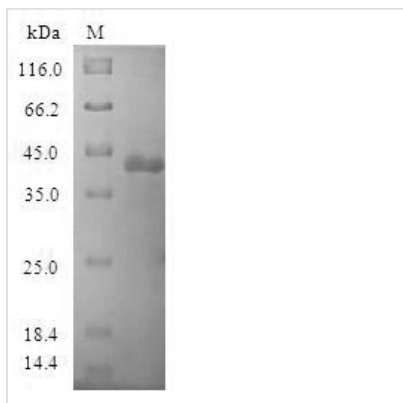




# Recombinant Human Ribonuclease P protein subunit p20 (POP7)

<b>Product Code</b>	CSB-EP018375HU
<b>Relevance</b>	Component of ribonuclease P, a protein complex that generates mature tRNA molecules by cleaving their 5'-ends. Also a component of RNase MRP complex, which cleaves pre-rRNA sequences.
<b>Abbreviation</b>	Recombinant Human POP7 protein
<b>Storage</b>	The shelf life is related to many factors, storage state, buffer ingredients, storage temperature and the stability of the protein itself. Generally, the shelf life of liquid form is 6 months at -20°C/-80°C. The shelf life of lyophilized form is 12 months at -20°C/-80°C.
<b>Uniprot No.</b>	O75817
<b>Alias</b>	Ribonucleases P/MRP protein subunit POP7 homolog
<b>Product Type</b>	Recombinant Protein
<b>Immunogen Species</b>	Homo sapiens (Human)
<b>Purity</b>	≥ 90% as determined by SDS-PAGE.
<b>Sequence</b>	MAENREPRGAVEAELDPVEYTLRKRLPSRLPRRPNDIYVNMKTDFKAQLARC QKLLDGGARGQNACSEIYIHGLGLAINRAINIALQLQAGSFGSLQVAANTSTVEL VDELEPETDTREPLTRIRNNSAIHIRVFRVTPK
<b>Research Area</b>	Epigenetics and Nuclear Signaling
<b>Source</b>	E.coli
<b>Target Names</b>	POP7
<b>Protein Names</b>	Recommended name: Ribonuclease P protein subunit p20 Short name= RNaseP protein p20 EC= 3.1.26.5 Alternative name(s): Ribonucleases P/MRP protein subunit POP7 homolog Short name= hPOP7
<b>Expression Region</b>	1-140aa
<b>Notes</b>	Repeated freezing and thawing is not recommended. Store working aliquots at 4°C for up to one week.
<b>Tag Info</b>	N-terminal GST-tagged
<b>Mol. Weight</b>	42.7kDa
<b>Protein Length</b>	Full Length
<b>Image</b>	



(Tris-Glycine gel) Discontinuous SDS-PAGE (reduced) with 5% enrichment gel and 15% separation gel.

### Reconstitution

We recommend that this vial be briefly centrifuged prior to opening to bring the contents to the bottom. Please reconstitute protein in deionized sterile water to a concentration of 0.1-1.0 mg/mL. We recommend to add 5-50% of glycerol (final concentration) and aliquot for long-term storage at -20°C/-80°C. Our default final concentration of glycerol is 50%. Customers could use it as reference.

### Shelf Life

The shelf life is related to many factors, storage state, buffer ingredients, storage temperature and the stability of the protein itself. Generally, the shelf life of liquid form is 6 months at -20°C/-80°C. The shelf life of lyophilized form is 12 months at -20°C/-80°C.