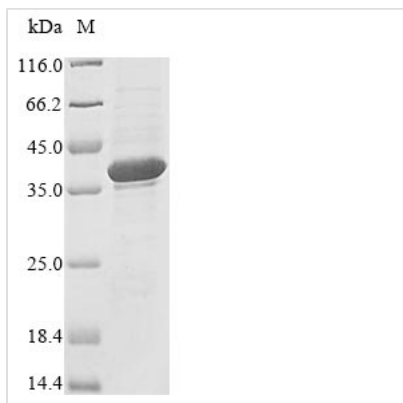


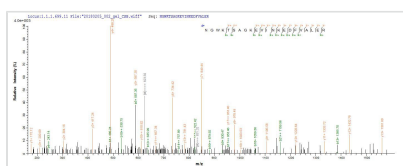


Recombinant Human Ribonuclease H1 (RNASEH1)

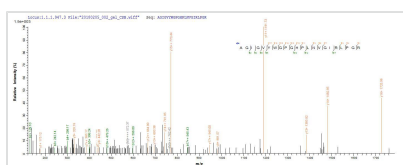
Product Code	CSB-EP019801HU
Relevance	Endonuclease that specifically degrades the RNA of RNA-DNA hybrids (PubMed:10497183). Plays a role in RNA polymerase II (RNAP II) transcription termination by degrading R-loop RNA-DNA hybrid formation at G-rich pause sites located downstream of the poly(A) site and behind the elongating RNAP II
Abbreviation	Recombinant Human RNASEH1 protein
Storage	The shelf life is related to many factors, storage state, buffer ingredients, storage temperature and the stability of the protein itself. Generally, the shelf life of liquid form is 6 months at -20°C/-80°C. The shelf life of lyophilized form is 12 months at -20°C/-80°C.
Uniprot No.	O60930
Product Type	Recombinant Protein
Immunogen Species	Homo sapiens (Human)
Purity	Greater than 85% as determined by SDS-PAGE.
Sequence	MSWLLFLAHRVALAALPCRRGSRGFGMFYAVRRGRKTGVFLTWNECRAQVD RFPAARFKKFATEDEAWAFVRKSASPEVSEGHENQHGQESEAKASKRLREPL DGDGHESAEPYAKHMKPSVEPAPPVSRDTFSYMGDFVVVYTDGCCSSNGRR RPRAGIGVYWGPGHPLNVGIRLPGRQTNQRAEIIHAACKAIEQAKTQNINKLVLY TDSMFTINGITNWWQGWKKNWKTSGKEVINKEDFVALERLTQGMDIQWMH VPGHSGFIGNEEADRLAREGAKQSED
Research Area	Epigenetics and Nuclear Signaling
Source	E.coli
Target Names	RNASEH1
Protein Names	Ribonuclease H type II RNH1
Expression Region	1-286aa
Notes	Repeated freezing and thawing is not recommended. Store working aliquots at 4°C for up to one week.
Tag Info	N-terminal 6xHis-tagged
Mol. Weight	37.6 kDa
Protein Length	Full Length
Image	



(Tris-Glycine gel) Discontinuous SDS-PAGE (reduced) with 5% enrichment gel and 15% separation gel.



Based on the SEQUEST from database of E.coli host and target protein, the LC-MS/MS Analysis result of CSB-EP019801HU could indicate that this peptide derived from E.coli-expressed Homo sapiens (Human) RNASEH1.



Based on the SEQUEST from database of E.coli host and target protein, the LC-MS/MS Analysis result of CSB-EP019801HU could indicate that this peptide derived from E.coli-expressed Homo sapiens (Human) RNASEH1.

Reconstitution

We recommend that this vial be briefly centrifuged prior to opening to bring the contents to the bottom. Please reconstitute protein in deionized sterile water to a concentration of 0.1-1.0 mg/mL. We recommend to add 5-50% of glycerol (final concentration) and aliquot for long-term storage at -20°C/-80°C. Our default final concentration of glycerol is 50%. Customers could use it as reference.

Shelf Life

The shelf life is related to many factors, storage state, buffer ingredients, storage temperature and the stability of the protein itself. Generally, the shelf life of liquid form is 6 months at -20°C/-80°C. The shelf life of lyophilized form is 12 months at -20°C/-80°C.