

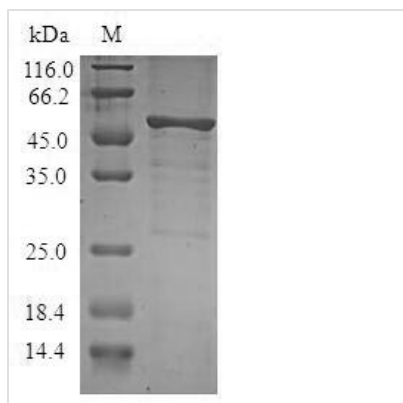


# Recombinant Human Serine/threonine-protein kinase 16 (STK16)

<b>Product Code</b>	CSB-EP022835HU
<b>Relevance</b>	Membrane-associated protein kinase that phosphorylates on serine and threonine residues. In vitro substrates include DRG1, ENO1 and EIF4EBP1. Also autophosphorylates. May be involved in secretory vesicle trafficking or intracellular signaling. May have a role in regulating stromal-epithelial interactions that occur during ductal morphogenesis in the mammary gland. May be involved in TGF-beta signaling. Able to autophosphorylate on Tyr residue; it is however unclear whether it has tyrosine-protein kinase toward other proteins.
<b>Abbreviation</b>	Recombinant Human STK16 protein
<b>Storage</b>	The shelf life is related to many factors, storage state, buffer ingredients, storage temperature and the stability of the protein itself. Generally, the shelf life of liquid form is 6 months at -20°C/-80°C. The shelf life of lyophilized form is 12 months at -20°C/-80°C.
<b>Uniprot No.</b>	O75716
<b>Alias</b>	Myristoylated and palmitoylated serine/threonine-protein kinase
<b>Product Type</b>	Recombinant Protein
<b>Immunogen Species</b>	Homo sapiens (Human)
<b>Purity</b>	Greater than 90% as determined by SDS-PAGE.
<b>Sequence</b>	GHALCVCSRGTVIIDNKRYLFIQKLGEGGFSYVDLVEGLHDGHFYALKRILCHE QQDREEAQREADMHRLFNHPNLRVAYCLRERGAKEAWLLLPFFKRGTLW NEIERLKDKGNFLTEDQILWLLLGICRGLEAIHAKGYAHRDLKPTNILLGDEGQP VLMDLGSMNQACIHVEGSRQALTLQDWAAQRCTISYRAPELFSVQSHCVIDER TDVWSLGCVLYAMMFEGEPYDMVFQKGDVALAVQNQLSIPQSPRHSSALR QLLNSMMTVDPHQRPHIPLLLSQLEALQPPAPGQHTTQI
<b>Research Area</b>	Signal Transduction
<b>Source</b>	E.coli
<b>Target Names</b>	STK16
<b>Protein Names</b>	Recommended name: Serine/threonine-protein kinase 16 EC= 2.7.11.1 Alternative name(s): Myristoylated and palmitoylated serine/threonine-protein kinase Short name= MPSK Protein kinase PKL12 TGF-beta-stimulated factor 1 Sho
<b>Expression Region</b>	1-305aa
<b>Notes</b>	Repeated freezing and thawing is not recommended. Store working aliquots at 4°C for up to one week.
<b>Tag Info</b>	N-terminal GST-tagged
<b>Mol. Weight</b>	61.5kDa


**Protein Length**

Full Length

**Image**


(Tris-Glycine gel) Discontinuous SDS-PAGE (reduced) with 5% enrichment gel and 15% separation gel.

**Reconstitution**

We recommend that this vial be briefly centrifuged prior to opening to bring the contents to the bottom. Please reconstitute protein in deionized sterile water to a concentration of 0.1-1.0 mg/mL. We recommend to add 5-50% of glycerol (final concentration) and aliquot for long-term storage at -20°C/-80°C. Our default final concentration of glycerol is 50%. Customers could use it as reference.

**Shelf Life**

The shelf life is related to many factors, storage state, buffer ingredients, storage temperature and the stability of the protein itself. Generally, the shelf life of liquid form is 6 months at -20°C/-80°C. The shelf life of lyophilized form is 12 months at -20°C/-80°C.