

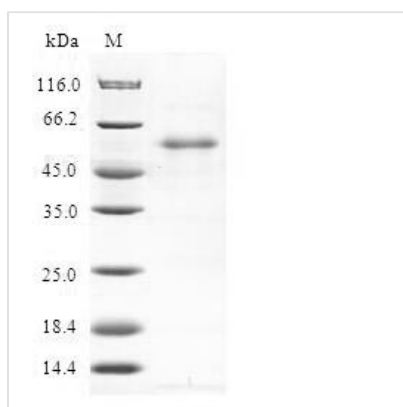


Recombinant Human Regulator of G-protein signaling 20 (RGS20)

Product Code	CSB-EP019652HU
Relevance	Inhibits signal transduction by increasing the GTPase activity of G protein alpha subunits thereby driving them into their inactive GDP-bound form. Binds selectively to G(z)-alpha and G(alpha)-i2 subunits, accelerates their GTPase activity and regulates their signaling activities. The G(z)-alpha activity is inhibited by the phosphorylation and palmitoylation of the G-protein. Negatively regulates mu-opioid receptor-mediated activation of the G-proteins
Abbreviation	Recombinant Human RGS20 protein
Storage	The shelf life is related to many factors, storage state, buffer ingredients, storage temperature and the stability of the protein itself. Generally, the shelf life of liquid form is 6 months at -20°C/-80°C. The shelf life of lyophilized form is 12 months at -20°C/-80°C.
Uniprot No.	BC015614
Alias	Gz-selective GTPase-activating protein
Product Type	Recombinant Protein
Immunogen Species	Homo sapiens (Human)
Purity	≥ 90% as determined by SDS-PAGE.
Sequence	EPAGASSPAGRVDGGLQMGSERMEMRKRQMPAAQDTPGAAPGQPGAGSR GSNACCFWCSCSCSCLTVRNQEDQRPTIASHELRLADLPTWEESPAPTR VNAWAQSFDKLMVTPAGRNAFREFLRTEFSEENMLFWMACEELKKEANKNII EKARIIYEDYISILSPKEVSLDSRVREVINRNMVEPSQHIFDDAQLQIYTLMHRDS YPRFMNSAVYKDLLQSLSEKSIEA
Research Area	Signal Transduction
Source	E.coli
Target Names	RGS20
Protein Names	Recommended name: Regulator of G-protein signaling 20 Short name= RGS20 Alternative name(s): Gz-selective GTPase-activating protein Short name= G(z)GAP Short name= Gz-GAP Regulator of G-protein signaling Z1 Regulator of Gz-sel
Expression Region	1-234aa
Notes	Repeated freezing and thawing is not recommended. Store working aliquots at 4°C for up to one week.
Tag Info	N-terminal GST-tagged
Mol. Weight	53.4kDa
Protein Length	Full Length of BC015614



Image



(Tris-Glycine gel) Discontinuous SDS-PAGE (reduced) with 5% enrichment gel and 15% separation gel.

Reconstitution

We recommend that this vial be briefly centrifuged prior to opening to bring the contents to the bottom. Please reconstitute protein in deionized sterile water to a concentration of 0.1-1.0 mg/mL. We recommend to add 5-50% of glycerol (final concentration) and aliquot for long-term storage at -20°C/-80°C. Our default final concentration of glycerol is 50%. Customers could use it as reference.

Shelf Life

The shelf life is related to many factors, storage state, buffer ingredients, storage temperature and the stability of the protein itself.

Generally, the shelf life of liquid form is 6 months at -20°C/-80°C. The shelf life of lyophilized form is 12 months at -20°C/-80°C.